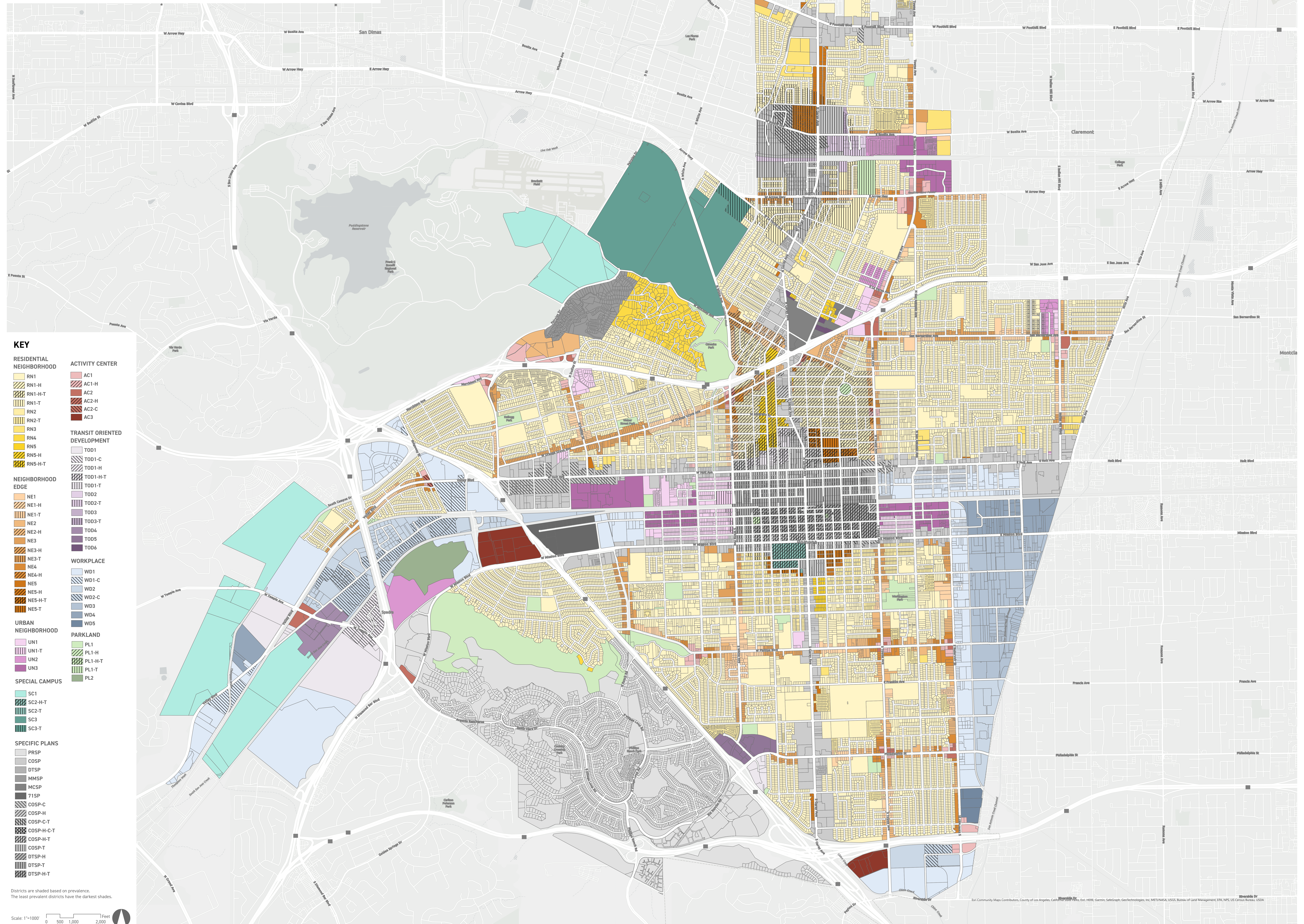


Pomona - Citywide Draft Zoning



KEY

RESIDENTIAL NEIGHBORHOOD	ACTIVITY CENTER
<ul style="list-style-type: none"> RN1 RN1-H RN1-H-T RN1-T RN2 RN2-T RN3 RN4 RN5 RN5-H RN5-H-T 	<ul style="list-style-type: none"> AC1 AC1-H AC2 AC2-C AC3
NEIGHBORHOOD EDGE	TRANSIT ORIENTED DEVELOPMENT
<ul style="list-style-type: none"> NE1 NE1-H NE1-T NE2 NE2-H NE3 NE3-H NE3-T NE4 NE4-H NE5 NE5-H NE5-H-T NE5-T 	<ul style="list-style-type: none"> TOD1 TOD1-C TOD1-H TOD1-H-T TOD1-T TOD2 TOD2-T TOD3 TOD3-T TOD4 TOD5 TOD6
URBAN NEIGHBORHOOD	WORKPLACE
<ul style="list-style-type: none"> UN1 UN1-T UN2 UN3 	<ul style="list-style-type: none"> WD1 WD1-C WD2 WD2-C WD3 WD4 WD5
SPECIAL CAMPUS	PARKLAND
<ul style="list-style-type: none"> SC1 SC2-H-T SC2-T SC3 SC3-T 	<ul style="list-style-type: none"> PL1 PL1-H PL1-H-T PL1-T PL2
SPECIFIC PLANS	
<ul style="list-style-type: none"> PRSP COSP DTSP MMSP MCSP 71SP COSP-C COSP-H COSP-C-T COSP-H-C-T COSP-H-T COSP-T DTSP-H DTSP-T DTSP-H-T 	

Districts are shaded based on prevalence. The least prevalent districts have the darkest shades.

Scale: 1"=1000'

0 500 1,000 2,000 Feet

Esri Community Maps Contributors, County of Los Angeles, California, Esri, HERE, Garmin, SafeGraph, GeoTechnologies, Inc, MET/NASA, USGS, Bureau of Land Management, EPA, NPS, US Census Bureau, USDA