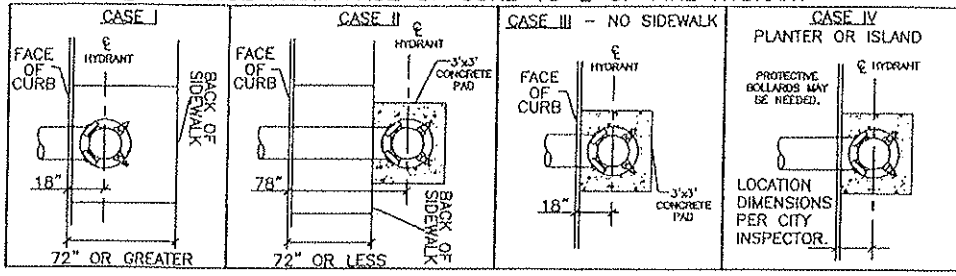
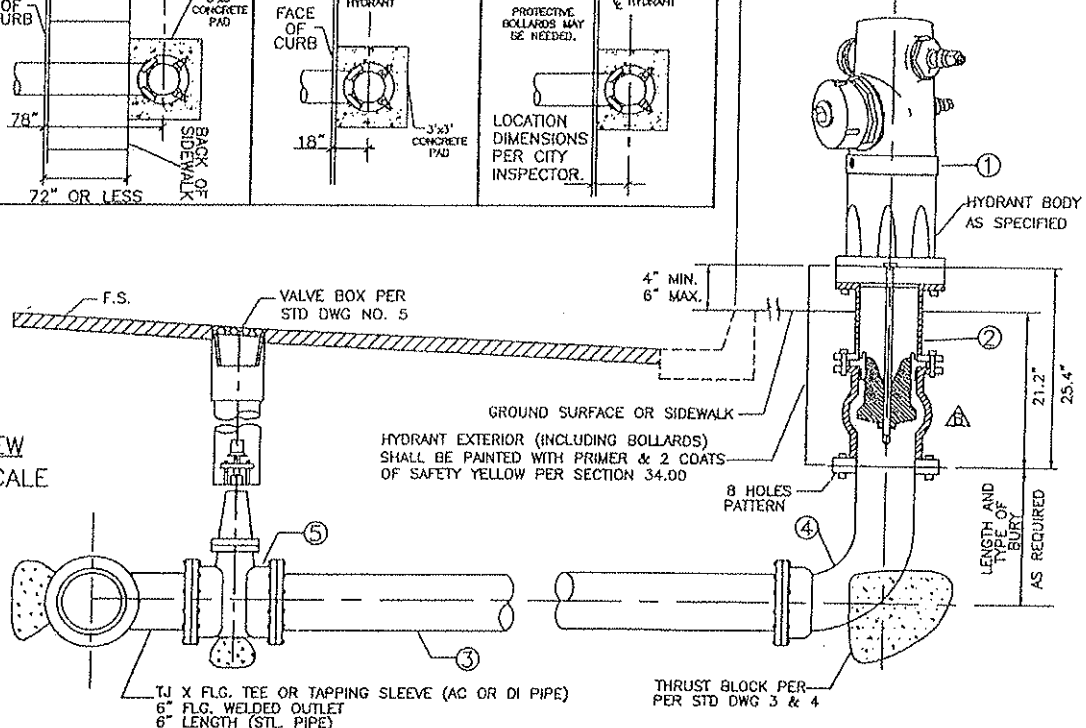


⑥ DISTANCE FROM FACE OF CURB TO ϕ OF FIRE HYDRANT



⑥ SEE LOCATION CASES I, II, III, IV



PLAN VIEW NOT TO SCALE

TOP VIEW NOT TO SCALE

NOTES:

1. TYPICAL LOCATION OF FIRE HYDRANT.
 - a. ON PROPERTY LINE WHEN IN MIDDLE OF BLOCK.
 - b. 1 FOOT INTO STRAIGHT SECTION OF CURB ON CORNER
2. 2 1/2" AND 4" OUTLETS SHALL BE AT 45° TO C/L OF STREET.
3. BLUE REFLECTIVE MARKER PER SPECIFICATIONS.
4. TAPPING SLEEVES SHALL NOT BE USED WITHIN 3' FROM A JOINT.
5. WHERE A CONCRETE SIDEWALK DOES NOT EXIST, AN 8" THICK 3'X3' CONCRETE PAD, SHALL BE POURED AROUND THE BREAK-OFF VALVE ASSEMBLY, WITH A DOWEL INTO THE EXISTING CURB/SIDEWALK AT 12" ON CENTER.

ITEM	QTY	DESCRIPTION
①	1	STANDARD 6" FIRE HYDRANT HEAD AND FLUTED SPOOL COMPLETE. ONE 4" STEAMER HOSE OUTLET AND ONE 2 1/2" HOSE OUTLET. 6 HOLE PATTERN JAMES JONES MODEL J--3700R, CLOW 2050 OR APPROVED EQUAL.
②	1	6" DIAMETER DI BREAK AWAY CHECK VALVE, JAMES JONES "TELL-TAIL" MODEL J--5010. ONE END FLG'D TO MATE WITH 6" ASA 150 # SLIP-ON FLG. OTHER END FLG'D TO MATE HYDRANT.
③	VAR	CLASS 350 DIP
④	1	M.J.X 8 HOLE FLG. BURY WITH MEGALUG JOINT RESTRAINT, DIP
⑤	1	6" R.W. GATE VALVE WITH PRESSURE RATING TO MATCH MAIN LINE WITH MJ AND MEGALUG JOINT RESTRAINT. ALL BURIED NUTS AND BOLTS SHALL BE A-316 STAINLESS STEEL, WITH AN APPLICATION OF "ANTI-SEIZE" LUBRICANT AND WRAPPED WITH 6 MIL (MINIMUM THICKNESS) PLASTIC.

ATI
 ATI ESKANDARI, CITY ENGINEER
 RCE NO. 63390
 5-24-12
 DATE

CITY OF POMONA
 PUBLIC WORKS DEPARTMENT

TYPICAL FIRE HYDRANT ASSEMBLY INSTALLATION

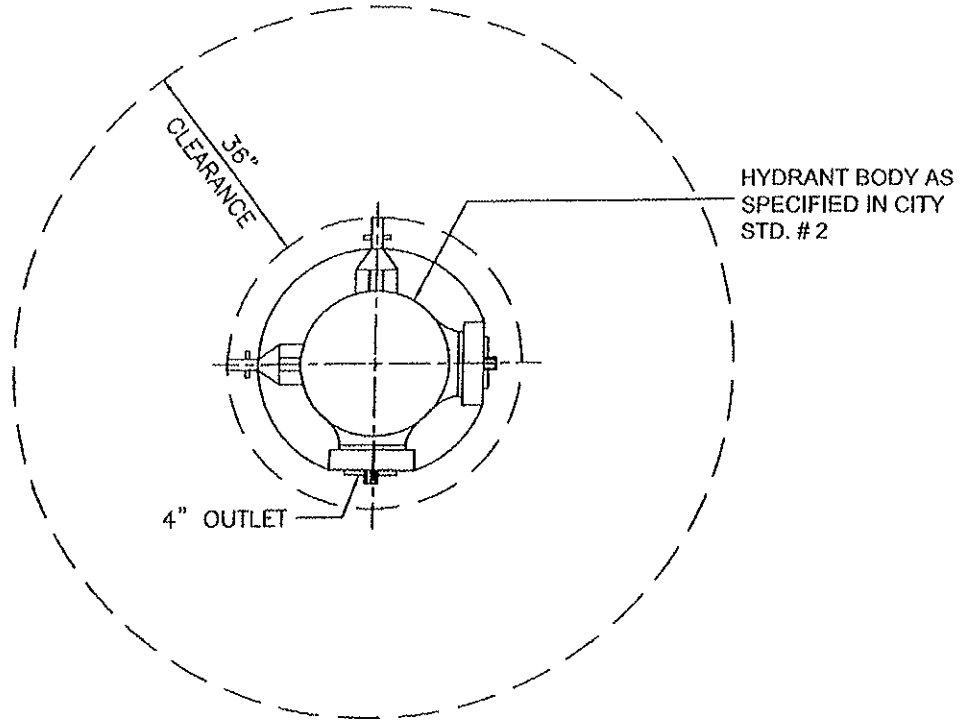
△	CHANGED CHECK VALVE MANUFACTURER & MODEL	8/3/09	GM
△	REVISED NOTE NO. 6 -- HYDRANT LOCATION	3/18/12	AE/GM
△	REVISIONS	DATE	INITIAL

DRAWN BY: NH/RO
 CHECKED BY: GM/SP/RG
 APPROVED BY: PW DIR./RG/JT

STANDARD

2

FIRE HYDRANT CLEARANCE REQUIREMENT DETAIL



PLAN VIEW
(TYPICAL)

NOTES:

NO WALLS, FENCES, GUARD POSTS, LANDSCAPING, MATERIAL, ETC., SHALL BE PLACED WITHIN THREE FEET OF A FIRE HYDRANT.

DRAWING NOT TO SCALE.

[Signature] 3-05-12
 ATI ESKANDARI, CITY ENGINEER DATE
 RCE NO. 63390

CITY OF POMONA
 PUBLIC WORKS DEPARTMENT

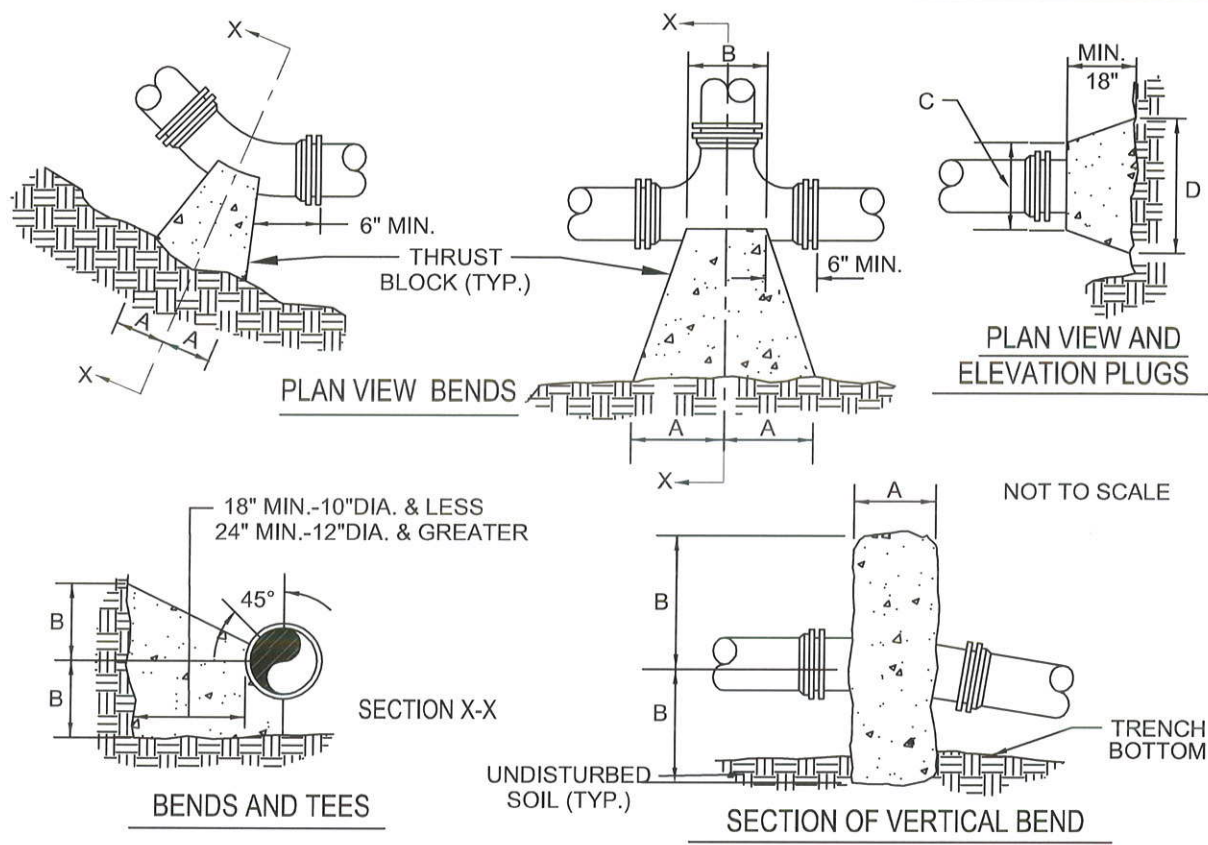
FIRE HYDRANT CLEARANCE
 REQUIREMENT DETAIL

REVISIONS	DATE	INITIAL
△ UPDATED CLEARANCE DETAILS	11/08	PW
△		

DRAWN BY: NH
 CHECKED BY: RG/JT
 APPROVED BY: PW DIRECTOR

STANDARD

2A




NOT TO SCALE

THRUST BLOCK CONSTRUCTION NOTES:

1. ALL THRUST BLOCKS SHALL BE POURED AGAINST UNDISTURBED EARTH.
2. FOR VERT. BEND DOWN IN EXCESS OF 11 1/4° BEND, ANCHORAGE SHALL BE NO. 6 REBAR OVER FITTING.
3. FOR VERTICAL BEND UPWARD, BLOCKING TO BE SIMILAR TO THAT FOR HORIZONTAL BEN.
4. GLANDS AND BOLTS SHALL BE PROTECTED FROM CONCRETE BY PLASTIC 6 MM FILM WHEN POURING THRUST BLOCKS.
5. ALL THRUST BLOCKS AND SUPPORT CONCRETE SHALL BE 2,000 PSI READY MIX 28-DAY CONCRETE.

THRUST BLOCK DIMENSIONS

PIPE SIZE	90° BEND		45° BEND		22 1/2° BEND		11 1/4° BEND		TEE		PLUG	
	A	B	A	B	A	B	A	B	A	B	C	D
4"	8"	12"	8"	8"	6"	6"	6"	6"	11"	9"	6"	10"
6"	18"	12"	8"	10"	8"	8"	8"	8"	11"	10"	12"	18"
8"	18"	13"	10"	10"	8"	8"	8"	8"	11"	12"	12"	24"
10"	20"	16"	12"	14"	8"	12"	8"	12"	14"	16"	16"	30"
12"	20"	16"	12"	14"	8"	12"	8"	12"	14"	16"	16"	30"
16"	26"	20"	16"	18"	11"	13"	11"	13"	18"	20"	20"	36"


 RENE GUERRERO, CITY ENGINEER
 RCE NO. 66263
 2/19/15
 DATE

CITY OF POMONA
PUBLIC WORKS DEPARTMENT

THRUST BLOCKS
DETAILS & NOTES

△	UPDATED DETAIL	2/14	GM
△	REVISIONS	DATE	INITIAL

DRAWN BY: NH
 CHECKED BY: GM/PS/DA
 APPROVED BY: DP


STANDARD

THRUST FORCE (LBS) WITH 150 PSI WATER PRESSURE

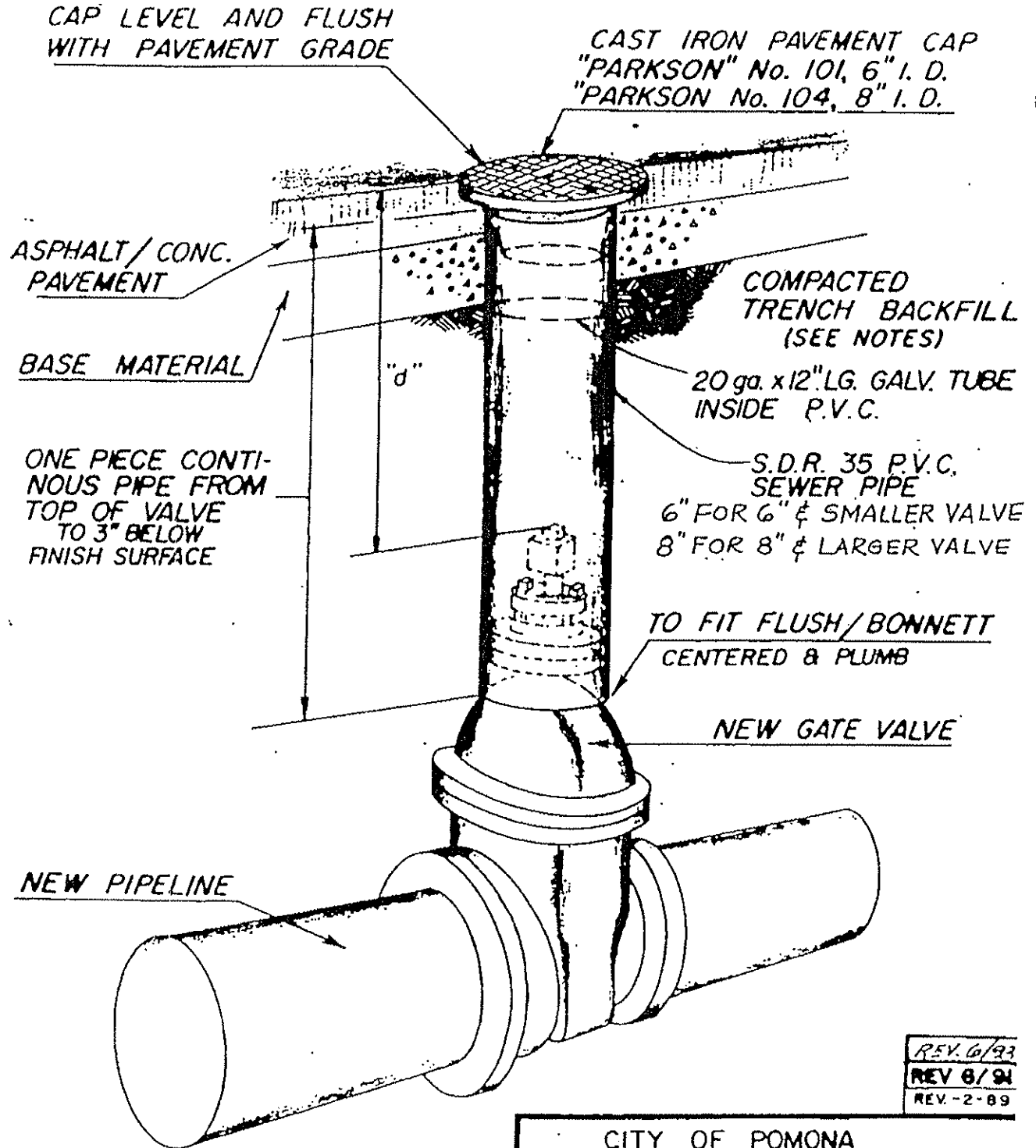
PIPE SIZE	90° BEND	45° BEND	22 1/2° BEND	11 1/4° BEND	TEE OR DEAD END
4"	4,300	2,300	1,200	1,000	3,000
6"	8,700	4,700	2,400	1,800	6,100
8"	14,800	8,000	4,100	3,000	10,500
10"	24,000	12,900	6,600	4,200	17,000
12"	33,800	18,300	9,300	5,800	24,000

BEARING LOADS FOR THRUST BLOCKS

SOIL TYPE	RECOMMENDED BEARING LOADS FOR THRUST BLOCKS (LBS / SF)
PEAT	0
CLAY	500
SAND	1,000
SAND & GRAVEL	1,500
SAND & GRAVEL CEMENTED WITH CLAY	2,000
SHALE	5,000

 RENE GUERRERO, CITY ENGINEER RCE NO. 66263		2/19/15 DATE	CITY OF POMONA PUBLIC WORKS DEPARTMENT	
		THRUST BLOCKS THRUST FORCE & BEARING LOADS		
△ UPDATED DETAIL	2/14 GM	DRAWN BY: NH CHECKED BY: GM/PS/DA	STANDARD	4
△ REVISIONS	DATE INITIAL	APPROVED BY: DP		

NOTE - IF DIM. "d" IS 48" OR GREATER, AN APPROVED VALVE STEM EXTENSION SHALL BE INSTALLED TO REDUCE "d" TO A MINIMUM OF 18" AND A MAXIMUM OF 24"



NOTE:
 IN THE EVENT THE G.V. IS BOXED AFTER PAVING IS COMPLETED, EXCAVATION SHALL BE BACKFILLED WITH BASE MTL. MECHANICALLY COMPACTED & PAVEMENT REPLACED TO THE DEPTH OF EXIST. PLUS 1" (MIN. 4")

CITY OF POMONA
 WATER DEPARTMENT

NEW VALVE BOXING DETAILS
 ON NEW OR EXIST. MAINS

Dwn. By C.L.S.
 Ckd. By C.L.S.

STANDARD

5

REV. 6/93
 REV 6/94
 REV. 2-89

NOTE-IF DIM "d" IS 48" OR GREATER, AN APPROVED VALVE STEM EXTENSION SHALL BE INSTALLED TO REDUCE "d" TO A MINIMUM OF 18" AND A MAXIMUM OF 24"

CAP LEVEL AND FLUSH WITH PAVEMENT GRADE

CAST IRON PAVEMENT CAP
"PARKSON" No. 101, 6" I. D.
"PARKSON" No. 104, 8" I. D.

*REPLACE A. C. WITH 4" MIN. OR EXIST. + 1" WHICHEVER IS GREATER

20 ga. x 12" LG. GALV. TUBE INSIDE P.V.C.

ASPHALT/CONC. PAVEMENT

EXIST. BASE MATERIAL

BACKFILL WITH AGGREGATE BASE MATERIAL

P.V.C. COUPLING

RAISING P.V.C. GATE BOXING - CUT 6"-12" BELOW GRADE ADD P.V.C. COUPLING & SHORT PIECE OF S.D.R. 35 P.V.C. TO WITHIN 2'-3" OF FINISH GRADE. INSERT NEW 20 ga. GALV. SLIP TOP IN PVMT. AREA

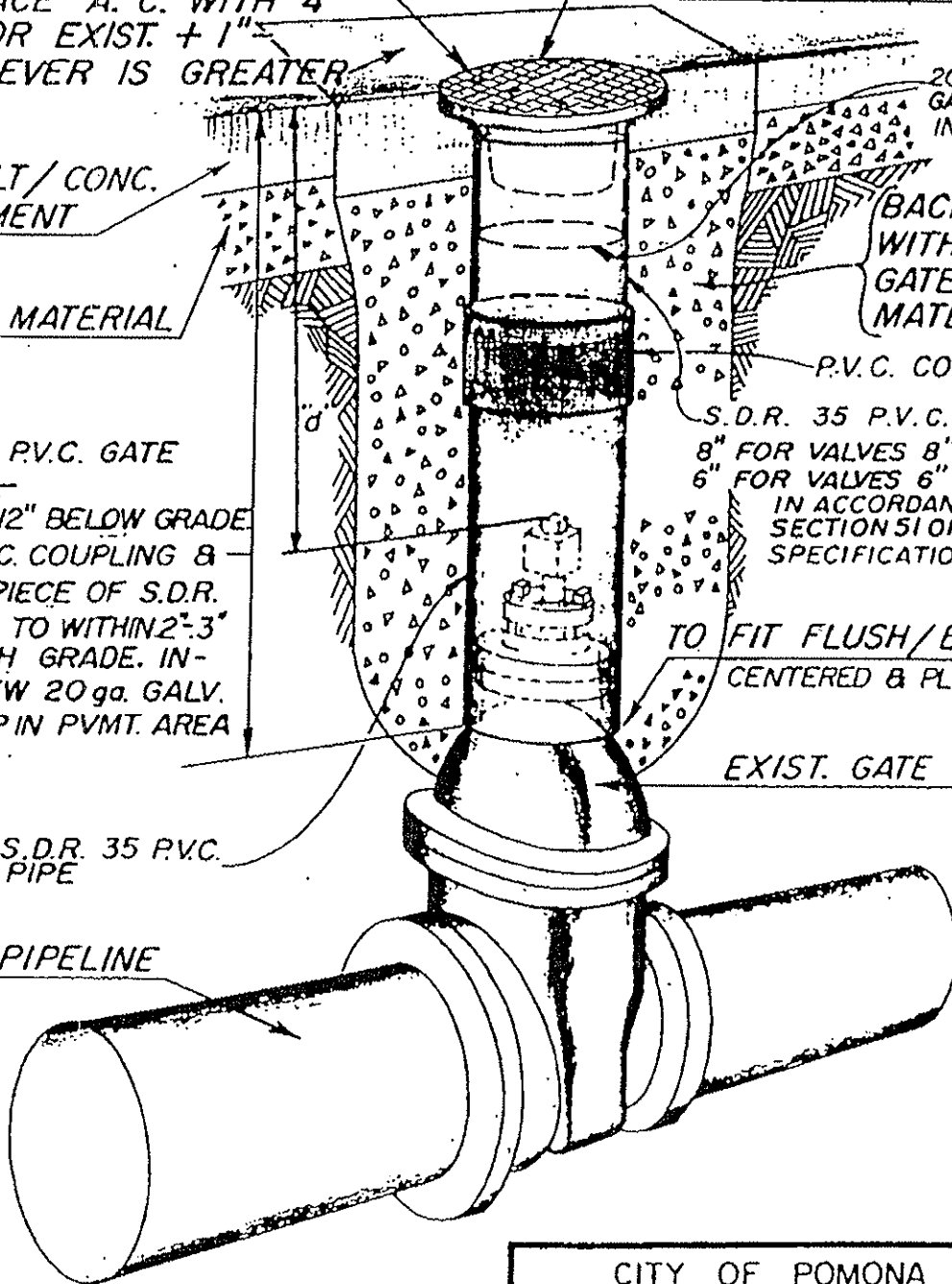
S.D.R. 35 P.V.C. SEWER PIPE 8" FOR VALVES 8" & LARGER 6" FOR VALVES 6" & SMALLER IN ACCORDANCE WITH SECTION 51 OF THE SPECIFICATIONS.

TO FIT FLUSH/BONNETT CENTERED & PLUMB

EXIST. GATE VALVE

EXIST. S.D.R. 35 P.V.C. SEWER PIPE

EXIST. PIPELINE



REV 6/91
REV-2-89

CITY OF POMONA WATER DEPARTMENT		
ADJUSTING P.V.C.-GV. BOX ON EXISTING MAINS		
Dwn. By <u>C.L.S.</u>	STANDARD	6
Ckd. By <u>C.L.S.</u>		

* CONCRETE PAVEMENT
REPLACE WITH P. C. C. TO EXIST. + 1"
IF COVERED WITH A. C. CAP
REPLACE WITH A. C. TO EXIST. + 1"

TRENCH WIDTH
 MIN. - PIPE O.D. + 12"
 MAX. - PIPE O.D. + 20"

SEE SPEC. FOR BACKFILL
 REQUIREMENTS

NO. 5 REBAR
 CONTINUOUS AS
 SHOWN

12" LAP

6"

SEE SPECIFICATION
 FOR CONCRETE

NO. 5 REBAR

NO. 4 TIES AT 24" ON
 CENTER

6"

NOT TO SCALE

René Guerrero

RENÉ GUERRERO, CITY ENGINEER
 RCE NO. 66263

2/19/15
 DATE

CITY OF POMONA
 PUBLIC WORKS DEPARTMENT

CONCRETE ENCASEMENT DETAIL

DRAWN BY: NH
 CHECKED BY: GM/DA/PS
 APPROVED BY: DP

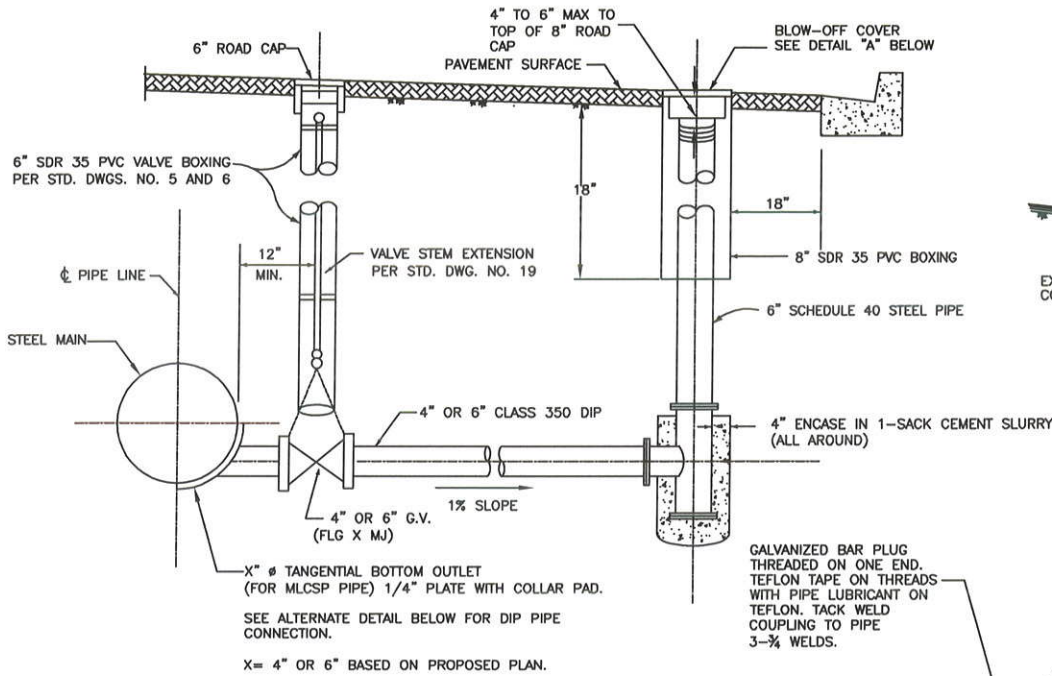
STANDARD

7

△	UPDATED DETAIL	2/14	GM
△	REVISIONS	DATE	INITIAL

TYPICAL BLOW-OFF DETAIL — WITHIN PAVEMENT INSTALLATION

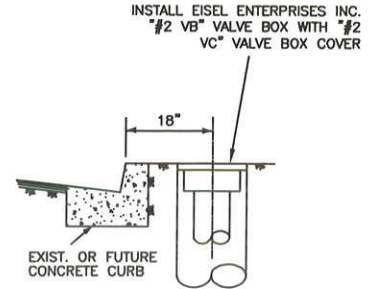
NOT TO SCALE



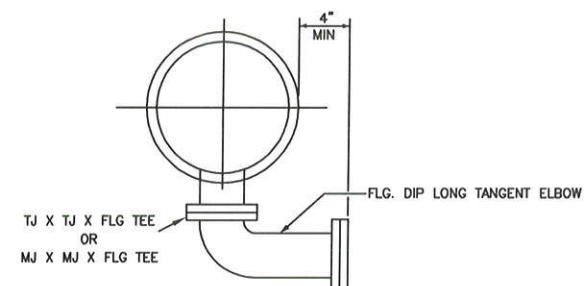
X = 4" OR 6" BASED ON PROPOSED PLAN.

SIDEWALK INSTALLATION

SIDEWALK INSTALLATION SHALL BE APPROVED BY THE CITY ENGINEER ON A CASE BY CASE BASIS.



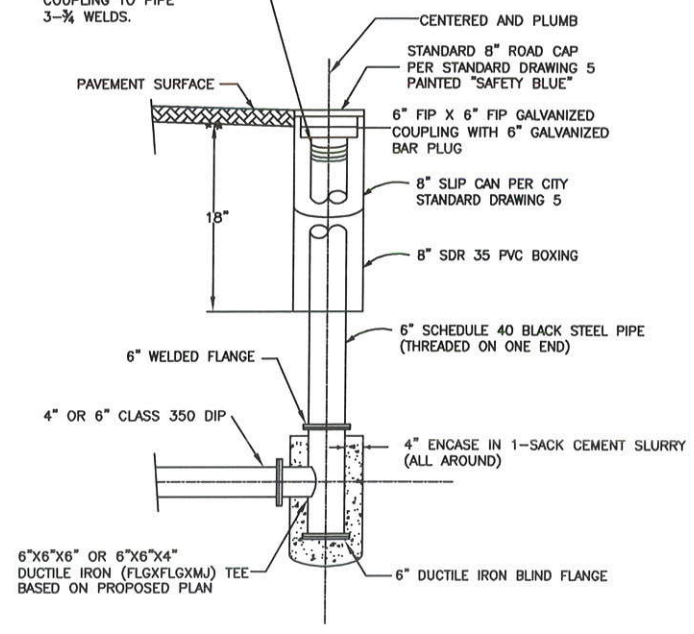
INSTALL EISEL ENTERPRISES INC. #2 VB VALVE BOX WITH #2 VC VALVE BOX COVER



CONNECTION FOR DIP PIPE

NOTES:

1. 6" BLOW-OFF RISER ASSEMBLY SHALL BE SHOP FABRICATED.
2. FABRICATION DRAWINGS SHALL BE SUBMITTED FOR APPROVAL IN ACCORDANCE WITH SECTION 8.0 OF THE CITY'S STANDARD SPECIFICATIONS FOR WATER FACILITY CONSTRUCTION.
3. IN CONCRETE. 8" EISEL ENTERPRISES VALVE BOX SERIES 8 3/4" I.D. TO BE USED IN SIDEWALK AND CEMENTED STREETS.
 -W29VC - CAST IRON COVER
 -W20VB - VALVE BOX



DETAIL "A"

NOT TO SCALE

René Guerrero
 RENE GUERRERO, CITY ENGINEER
 RCE NO. 66263

2/19/15
 DATE

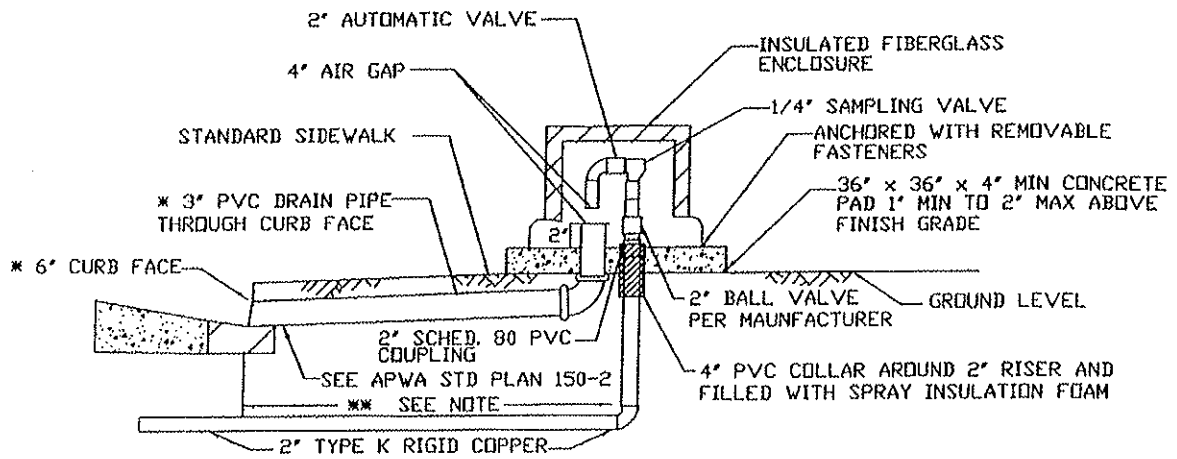
CITY OF POMONA
 PUBLIC WORKS DEPARTMENT

4" OR 6" BLOW-OFF DETAIL

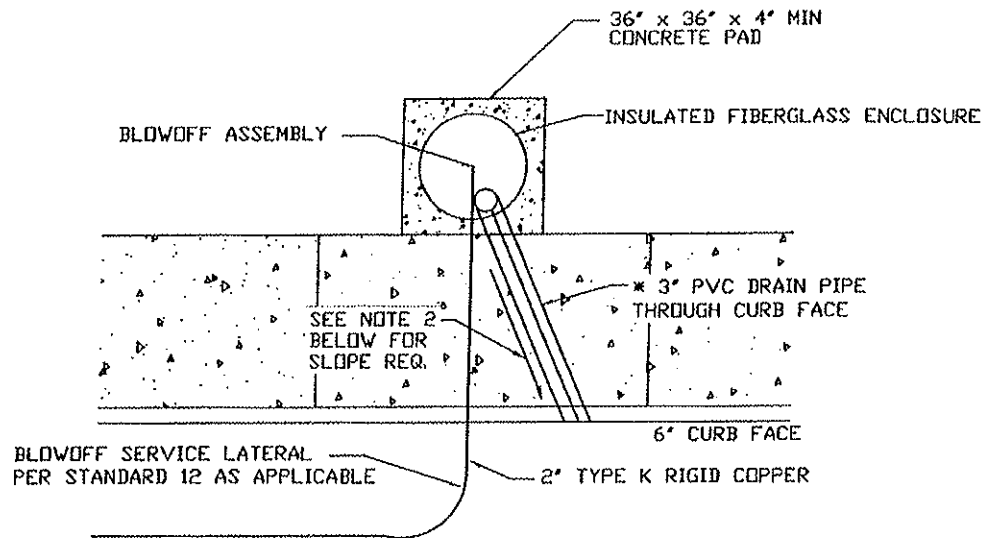
△	UPDATED DETAIL	1/14	GM
△	REVISIONS	DATE	INITIAL

DRAWN BY: NH
CHECKED BY: GM/AC/DA
APPROVED BY: DP

STANDARD 9



PROFILE VIEW



PLAN VIEW

NOTES:

1. - AUTOMATIC VALVE SHALL BE ECLIPSE MODEL 9800-WC BLOW-OFF ASSEMBLY, (OR APPROVED EQUAL) WARM CLIMATE, 180 GPM AT 60 PSI WITH TIMER, ENCLOSURE, PAD & APPROPRIATE DRAIN PIPE.
2. - OUTLET FLOW AT CURB FACE SHALL BE DEFLECTED TO FLOW WITH NATURAL STREET DRAINAGE.
3. - USE 2" BRASS VERTICAL RISER WITH 2" SCHED. 80 PVC COUPLING AT GROUND LINE & 2" BALL VALVE ABOVE GROUND, 1/4" SAMPLING VALVE AND 2" AUTOMATIC FLUSHING VALVE.

- * DRAIN PIPE
3" FOR 6" CURB
4" FOR 8" CURB
BOTTOM OF DRAIN PIPE TO BE 1" ABOVE GUTTER FLOW-LINE.
- ** ASSEMBLY TO BE INSTALLED WITHIN PUBLIC RIGHT-OF-WAY OR CITY EASEMENT WITH A CONCRETE PAD. INSTALLATION LOCATION SHALL BE BEHIND SIDEWALK OR PLACED 1' BEHIND CURB IN PARKWAY.

[Signature]
 ATT ESKANDARI, CITY ENGINEER
 RCE NO. 63390

3-05-12
 DATE

CITY OF POMONA
 PUBLIC WORKS DEPARTMENT

2" AUTOMATIC BLOW-OFF VALVE
 DETAILS

UPDATED MODEL NUMBER	10/09	GM/SP	DRAWN BY: NH	STANDARD	9A
REVISIONS	DATE	INITIAL	CHECKED BY: GM/SP/RG		
			APPROVED BY: PW DIR		

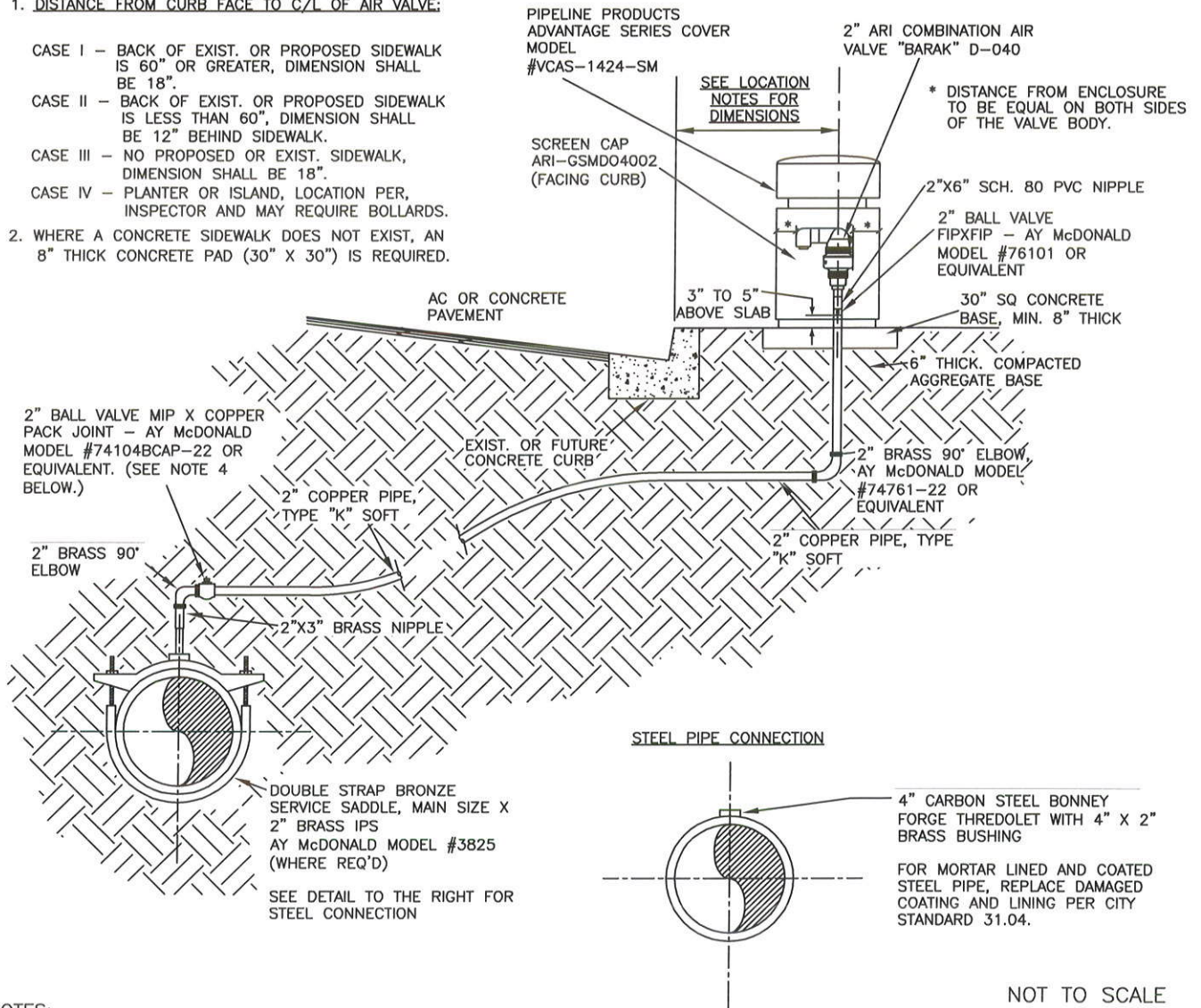
PROFILE VIEW

ENCLOSURE LOCATION NOTES

1. DISTANCE FROM CURB FACE TO C/L OF AIR VALVE:

- CASE I - BACK OF EXIST. OR PROPOSED SIDEWALK IS 60" OR GREATER, DIMENSION SHALL BE 18".
- CASE II - BACK OF EXIST. OR PROPOSED SIDEWALK IS LESS THAN 60", DIMENSION SHALL BE 12" BEHIND SIDEWALK.
- CASE III - NO PROPOSED OR EXIST. SIDEWALK, DIMENSION SHALL BE 18".
- CASE IV - PLANTER OR ISLAND, LOCATION PER, INSPECTOR AND MAY REQUIRE BOLLARDS.

2. WHERE A CONCRETE SIDEWALK DOES NOT EXIST, AN 8" THICK CONCRETE PAD (30" X 30") IS REQUIRED.



NOTES:

1. MAINTAIN CONTINUOUS POSITIVE SLOPE FROM MAIN TO AIR RELEASE/AIR VACUUM VALVE.
2. SLIP OR COPPER FITTINGS WITH SILVER SOLDER BRAZING (STA-SILV. 15) MAY BE USED IN LIEU OF COPPER PACK JOINTS.
3. ENCLOSURE INSTALLATION REQUIRES (3 EA.) 1/2" X 2-1/2" CONCRETE ANCHORS (HOT DIPPED GALVANIZED).
4. BOX VALVE PER CITY WATER STANDARD SPECIFICATIONS SECTION 32.07.
5. TAPPING SLEEVES SHALL NOT BE USED WITHIN 3 FT. OF A JOINT.

René Guerrero
 RENE GUERRERO, CITY ENGINEER
 RCE NO. 66263
 2/19/15
 DATE

CITY OF POMONA
 PUBLIC WORKS DEPARTMENT

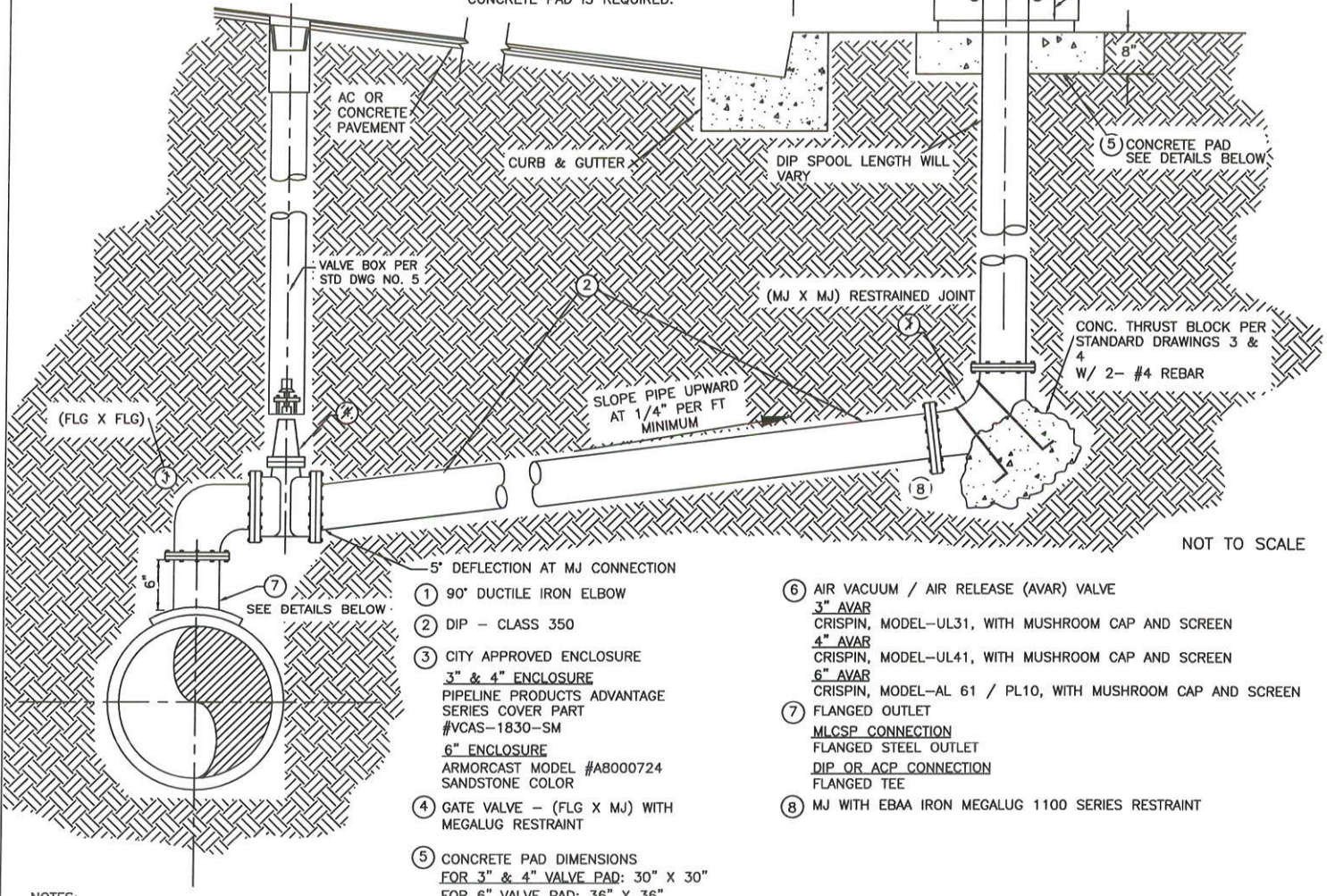
△	UPDATED PER CURRENT INSTALLATION PROCEDURE	1/15	GM
△	REVISIONS	DATE	INITIAL

2" COMBINATION AIR VALVE	
DRAWN BY: NH/LO	STANDARD 10A
CHECKED BY: GM/DA	
APPROVED BY: DP	

ENCLOSURE LOCATION NOTES

- ENCLOSURE SHALL BE LOCATED 5 FEET BEHIND THE CURB RETURN OR THE DRIVEWAY APRON.
- DISTANCE FROM CURB FACE TO C/L OF AIR VALVE FOR 4 INCH AND SMALLER:
 - CASE I - BACK OF EXIST. OR PROPOSED SIDEWALK IS 60" OR GREATER, DIMENSION SHALL BE 18".
 - CASE II - BACK OF EXIST. OR PROPOSED SIDEWALK IS LESS THAN 60", DIMENSION SHALL BE 12" BEHIND SIDEWALK.
 - CASE III - NO PROPOSED OR EXIST. SIDEWALK DIMENSION IS 18".
 - CASE IV - PLANTER OR ISLAND, LOCATION PER, INSPECTOR AND MAY REQUIRE BOLLARDS.
- WHERE A CONCRETE SIDEWALK DOES NOT EXIST, AN 8" THICK CONCRETE PAD IS REQUIRED.


- ENCLOSURE SHALL BE LOCATED 5 FEET BEHIND THE CURB RETURN OR THE DRIVEWAY APRON.
- DISTANCE FROM CURB FACE TO C/L OF AIR VALVE FOR 6 INCH:
 - CASE I - BACK OF EXIST. OR PROPOSED SIDEWALK IS 72" OR GREATER, DIMENSION SHALL BE 24".
 - CASE II - BACK OF EXIST. OR PROPOSED SIDEWALK IS LESS THAN 72", DIMENSION SHALL BE 18" BEHIND SIDEWALK.
 - CASE III - NO PROPOSED OR EXISTING SIDEWALK, DIMENSION IS 24".
- WHERE A CONCRETE SIDEWALK DOES NOT EXIST, AN 8" THICK CONCRETE PAD IS REQUIRED.



- ① 90° DUCTILE IRON ELBOW
- ② DIP - CLASS 350
- ③ CITY APPROVED ENCLOSURE
3" & 4" ENCLOSURE
PIPELINE PRODUCTS ADVANTAGE
SERIES COVER PART
#VCAS-1830-SM
6" ENCLOSURE
ARMORCAST MODEL #A8000724
SANDSTONE COLOR
- ④ GATE VALVE - (FLG X MJ) WITH
MEGALUG RESTRAINT
- ⑤ CONCRETE PAD DIMENSIONS
FOR 3" & 4" VALVE PAD: 30" X 30"
FOR 6" VALVE PAD: 36" X 36"
- ⑥ AIR VACUUM / AIR RELEASE (AVAR) VALVE
3" AVAR
CRISPIN, MODEL-UL31, WITH MUSHROOM CAP AND SCREEN
4" AVAR
CRISPIN, MODEL-UL41, WITH MUSHROOM CAP AND SCREEN
6" AVAR
CRISPIN, MODEL-AL 61 / PL10, WITH MUSHROOM CAP AND SCREEN
- ⑦ FLANGED OUTLET
MLCSP CONNECTION
FLANGED STEEL OUTLET
DIP OR ACP CONNECTION
FLANGED TEE
- ⑧ MJ WITH EBAA IRON MEGALUG 1100 SERIES RESTRAINT

NOTES:

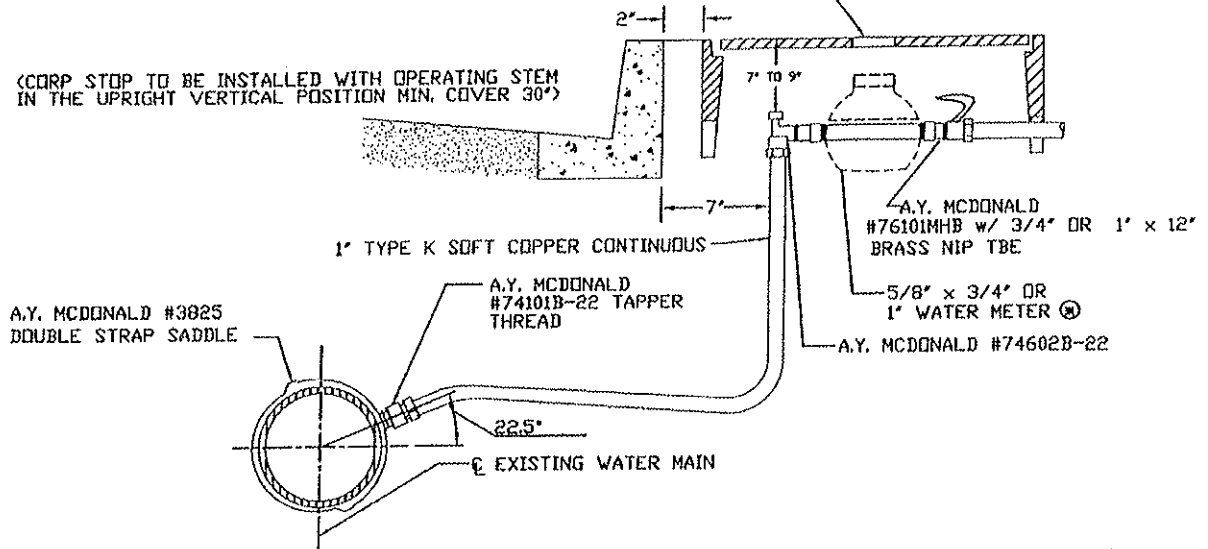
- TAP SHALL BE ON THE TOP OF THE PIPE AT OR WITHIN 12" OF THE TRUE HIGH POINT ON THE LINE IN ALL CASES.
- ENCLOSURE LOCATION SHALL BE LOCATED PER CITY STANDARD SPECIFICATIONS FOR WATER FACILITY CONSTRUCTION SECTION 31.13.
- ENCLOSURE INSTALLATION REQUIRES (3 EA.) 1/2" X 2-1/2" CONCRETE ANCHORS (HOT DIPPED GALVANIZED).
- BOX VALVE PER CITY STANDARD SPECIFICATIONS FOR WATER FACILITY CONSTRUCTION SECTION 32.07.
- ALL BURIED NUTS AND BOLTS SHALL BE TYPE 316 STAINLESS STEEL. ALL NUTS AND BOLTS MUST HAVE AN APPLICATION OF "ANTI-SEIZE" LUBRICANT AND BE WRAPPED WITH A MINIMUM 6 MIL PLASTIC.
- TAPPING SLEEVES SHALL NOT BE USED WITHIN 3 FEET OF A JOINT.

 RENE GUERRERO, CITY ENGINEER RCE NO. 66263		2/19/15 DATE	
△	UPDATED STANDARD	2/14	GM
△	REVISIONS	DATE	INITIAL

CITY OF POMONA PUBLIC WORKS DEPARTMENT	
3", 4", 6" COMBINATION AIR VALVE	
DRAWN BY: NCH CHECKED BY: PS/DA/AC APPROVED BY: DP	STANDARD 10B

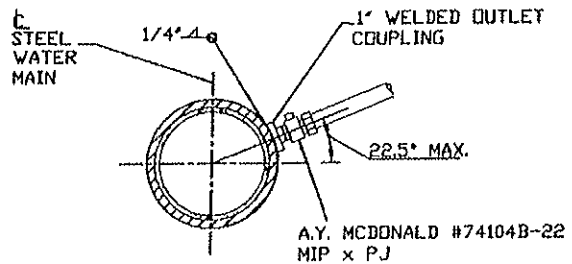
ARMORCAST PRODUCTS COMPANY
 P6000485 BOX
 A6000484DQ COVER WITH READ LID A6000487
 SEE NOTE NO. 3

(CORP STOP TO BE INSTALLED WITH OPERATING STEM
 IN THE UPRIGHT VERTICAL POSITION MIN. COVER 30")

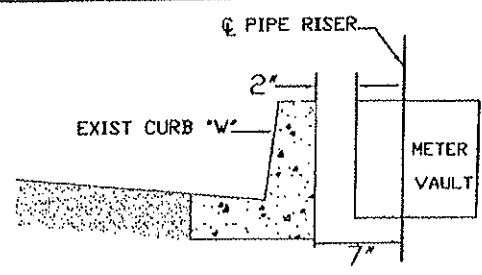


TYPICAL INSTALLATION FOR 1" SERVICE WITH 5/8" x 3/4" OR 1" METER
 NO SCALE

⊗ - WATER METER FURNISHED BY CITY




CONNECTION TO STEEL PIPE
 NO SCALE



METER VAULT LOCATION
 NO SCALE

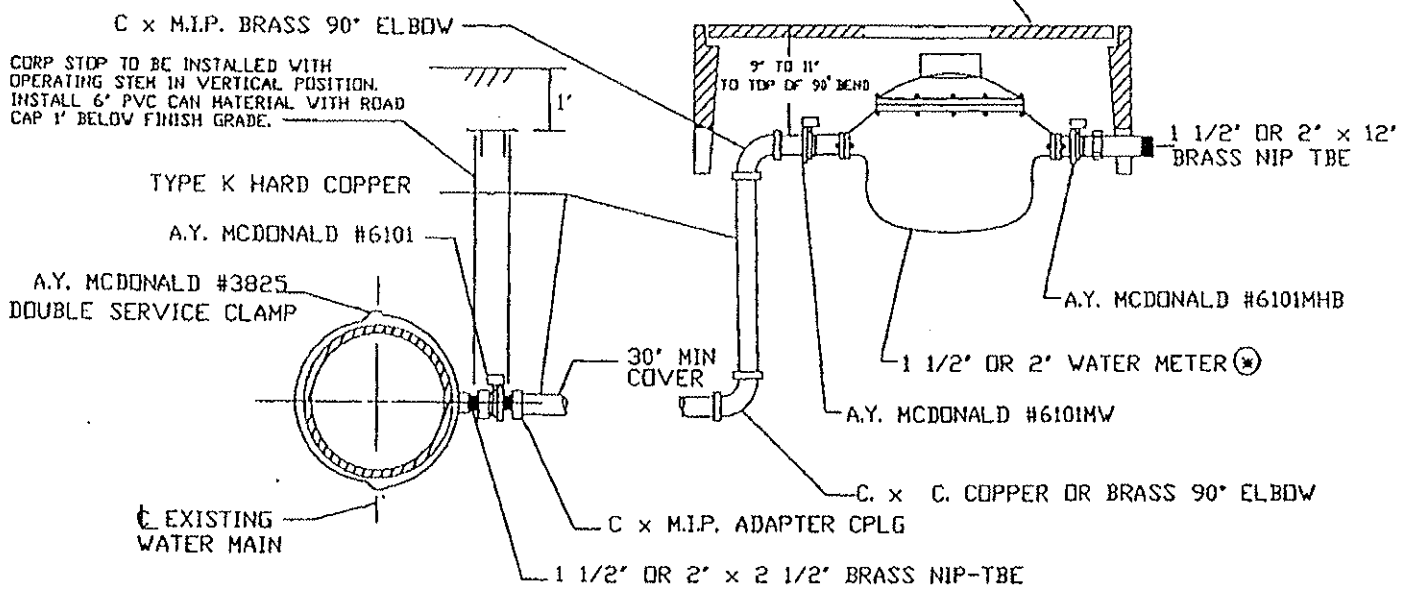
NOTES:

1. - CONTRACTOR SHALL CHISEL A "W" ON CURB FACE TO INDICATE SERVICE SADDLE CORPORATION STOP LOCATION.
2. - CONTRACTOR SHALL FLUSH SERVICE LINE, IN THE PRESENCE OF CITY INSPECTOR, PRIOR TO ACCEPTANCE.
3. - CONTRACTOR SHALL FURNISH A TRAFFIC-RATED METER BOX, COVERS & LIDS FOR SERVICES INSTALLED BEHIND "ROLL" TYPE CURB.
4. - ALL SPECIFIED MANUFACTURERS AND MODELS ARE TYPICAL, BUT MAY HAVE AN APPROVED EQUAL PRODUCT.
5. - ALL FITTINGS SHALL BE NO GREATER THAN 0.25% LEAD CONTENT

 ALI ESKANDARI, CITY ENGINEER RCE NO. 63390		3-05-12 DATE	
△ UPDATE PER AB 1953	1/10	PW	
△ REVISIONS	DATE	INITIAL	

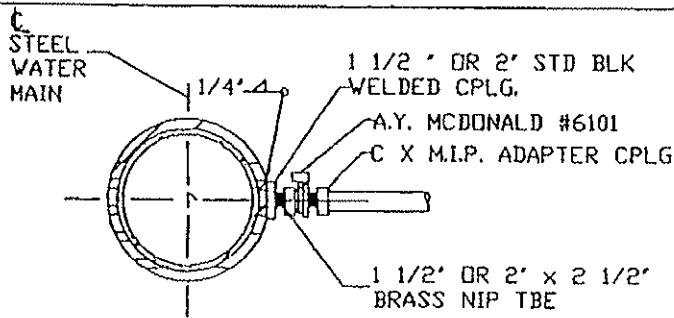
CITY OF POMONA PUBLIC WORKS DEPARTMENT	
INSTALLATION OF 1" SERVICE WITH 5/8"X3/4" OR 1" METERS	
DRAWN BY: NH	STANDARD 11
CHECKED BY: GM/SP/RG	
APPROVED BY: PW DIRECTOR	

ARMORCAST PRODUCTS COMPANY
 P6001534X12 BOX
 A6001643D2 COVER WITH READ LID A6000482
 SEE NOTE NO. 3

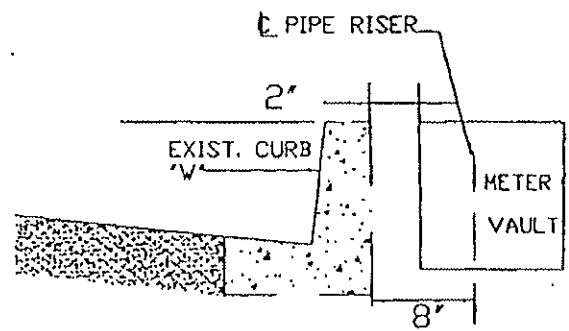


TYPICAL INSTALLATION FOR 1 1/2" & 2" SERVICE & METER
 NO SCALE

⊗ WATER METER FURNISHED BY CITY



CONNECTION TO STEEL PIPE
 NO SCALE



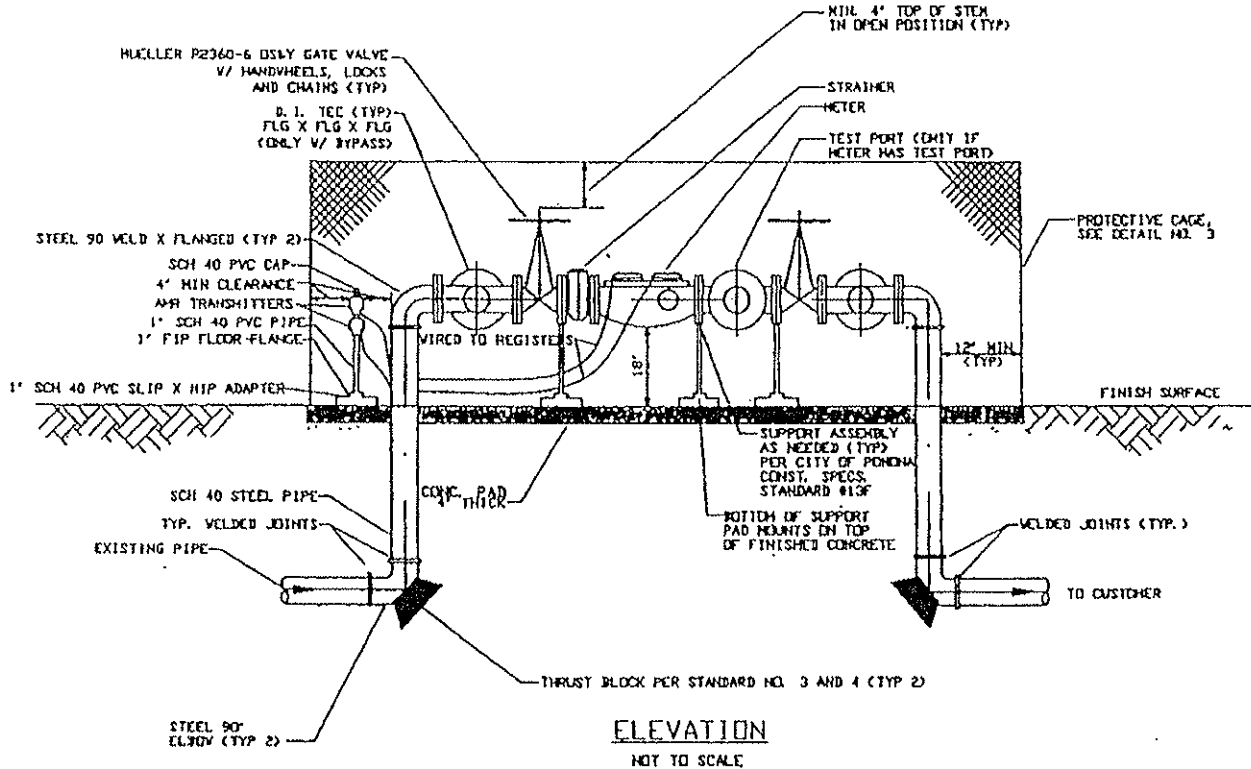
METER VAULT LOCATION
 NO SCALE

NOTES:

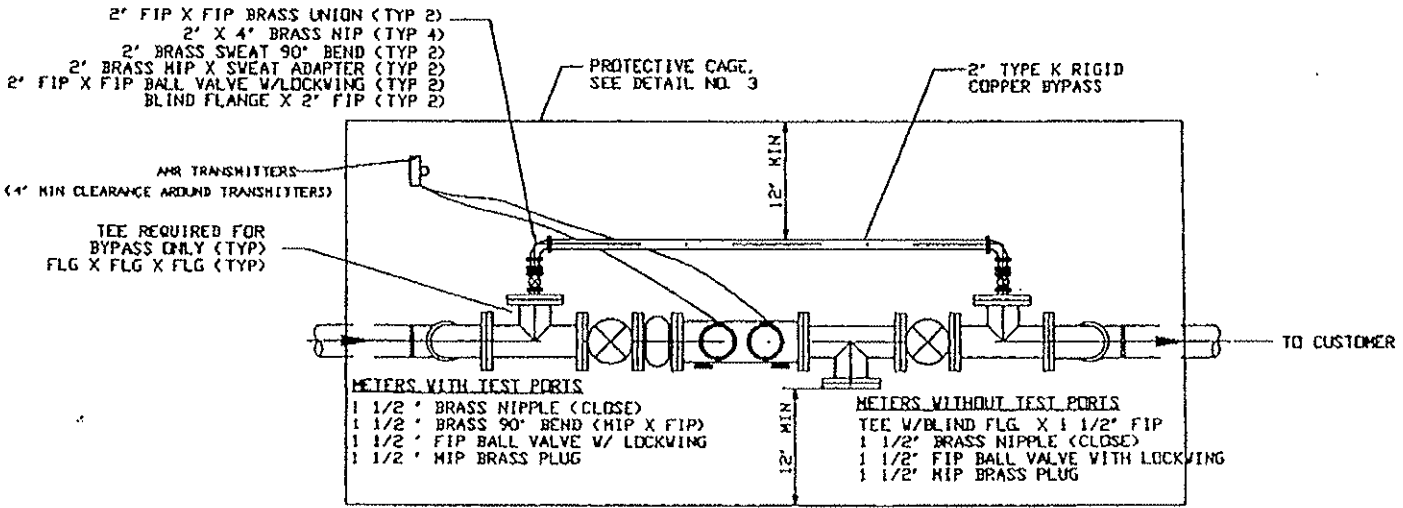
1. - CONTRACTOR SHALL CHISEL A "W" ON CURB FACE TO INDICATE SERVICE LOCATION.
2. - CONTRACTOR SHALL FLUSH SERVICE LINE, IN THE PRESENCE OF CITY INSPECTOR, PRIOR TO ACCEPTANCE.
3. - CONTRACTOR SHALL FURNISH TRAFFIC-RATED METER BOX COVERS & LIDS WHERE REQUIRED DUE TO LOCATION.

CITY OF POMONA PUBLIC WORKS DEPARTMENT	
INSTALLATION OF 1 1/2" & 2" SERVICES & METERS	
CHECKED BY: EV	STANDARD 12
CHECKED BY: RG RG	
DATE: NOVEMBER 17, 2003	

APPROVED BY: *[Signature]*
 DATE: NOV. 17, 2003
 CITY ENGINEER/P.W. DIRECTOR
 HARRY POPPER, UTILITY SERVICES DIRECTOR



ELEVATION
NOT TO SCALE

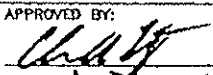


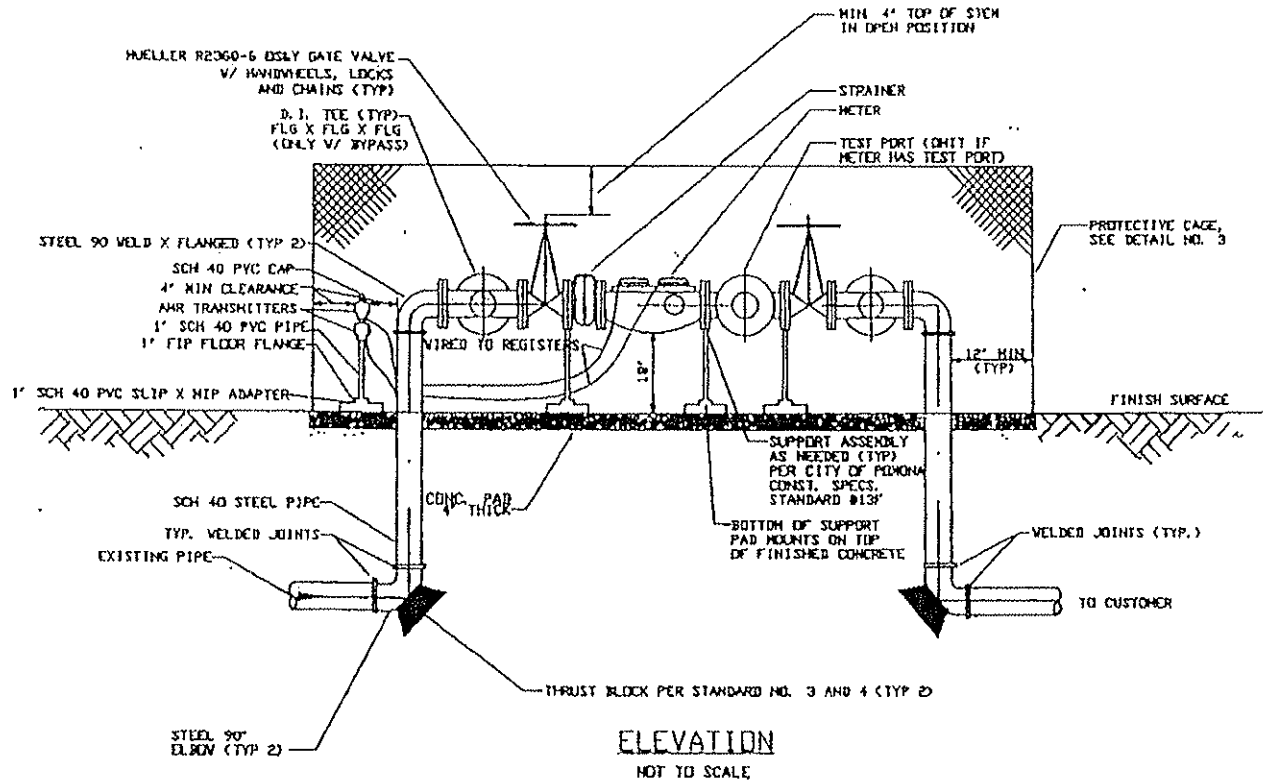
PLAN
NOT TO SCALE

NOTES:

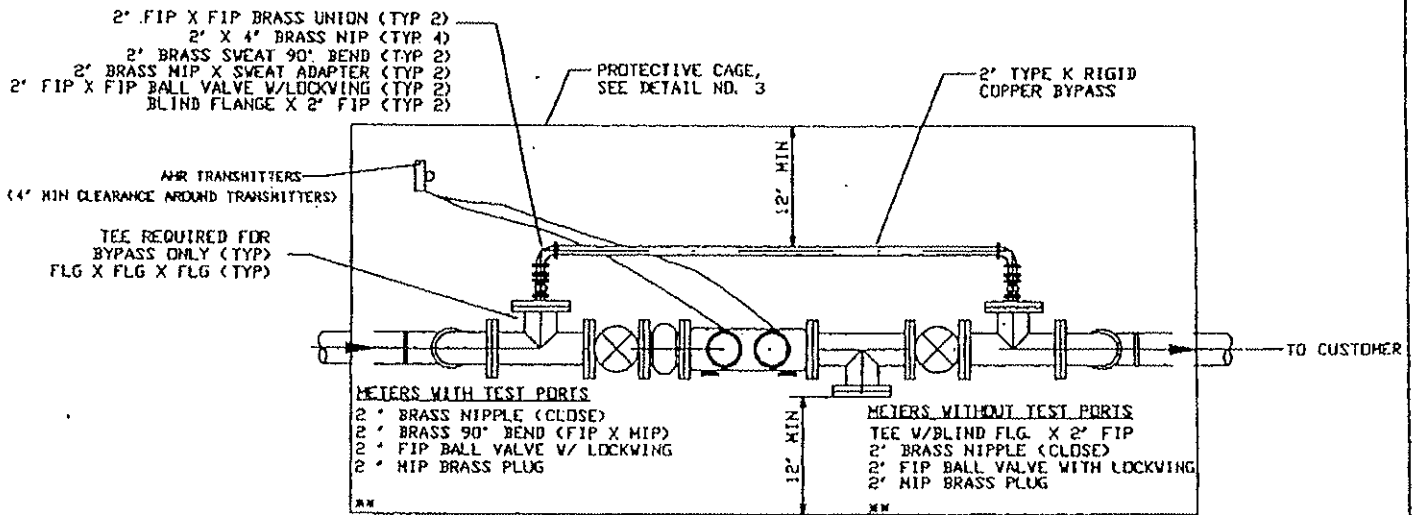
- 1) BYPASS IS REQUIRED, IT SHALL BE 2" TYPE "K" RIGID COPPER.
- 2) ALL JOINTS FLANGED UNLESS OTHERWISE SHOWN. ALL ABOVE-GROUND FASTENERS (NUTS AND BOLTS) SHALL BE STANDARD STEEL, ZINC-PLATED TYP.
- 3) GATE VALVES SHALL HAVE EVERDUR STEMS, HANDWHEELS & DS&Y OPENING CCV
- 4) CONCRETE PER CITY OF POMONA CONSTRUCTION SPECIFICATIONS STANDARD DRAWINGS
- 5) ALL UNDERGROUND WORK IS TO BE WELDED.

2" BALL VALVE w/ LOCKWING } A. Y. McDONALD #6101W (SEE STANDARD 12)
 1 1/2" BALL VALVE w/ LOCKWING } A. Y. McDONALD #6101V (SEE STANDARD 12)

CITY OF POMONA PUBLIC WORKS DEPARTMENT	
3' - 4' ABOVE GROUND METER INSTALLATION	
APPROVED BY:  CHRIS WOOD, CIVIL ENGINEER/P.W. DIRECTOR	DRAWN BY: M. LAM/EV CHECKED BY: RC P.L.A. DATE: NOVEMBER 17, 2005
REV. 7/2/03 DAV REV. 5/6/05 DAV	STANDARD 13 (A2)



ELEVATION
NOT TO SCALE



PLAN
NOT TO SCALE

NOTES:

- 1) BYPASS IS REQUIRED, IT SHALL BE 2" TYPE "K" RIGID COPPER.
- 2) ALL JOINTS FLANGED UNLESS OTHERWISE SHOWN. ALL ABOVE-GROUND FASTENERS (NUTS AND BOLTS) SHALL BE STANDARD STEEL, ZINC-PLATED TYP.
- 3) GATE VALVES SHALL HAVE EVERDUR STEMS, HANDWHEELS & OSLY OPENING CCV
- 4) CONCRETE PER CITY OF POMONA CONSTRUCTION SPECIFICATIONS STANDARD DRAWINGS
- 5) ALL UNDERGROUND WORK IS TO BE WELDED.

** FIRE SERVICE METERS REQUIRE 3" TEST PORTS. INSTALLATION AND MATERIALS WILL BE SAME AS 2" PORTS.

2" BALL VALVE W/ LOCKWING } A.Y. McDONALD #6101V
(SEE STANDARD 12)

CITY OF POMONA
PUBLIC WORKS DEPARTMENT
6" - 10" ABOVE GROUND METER
INSTALLATION

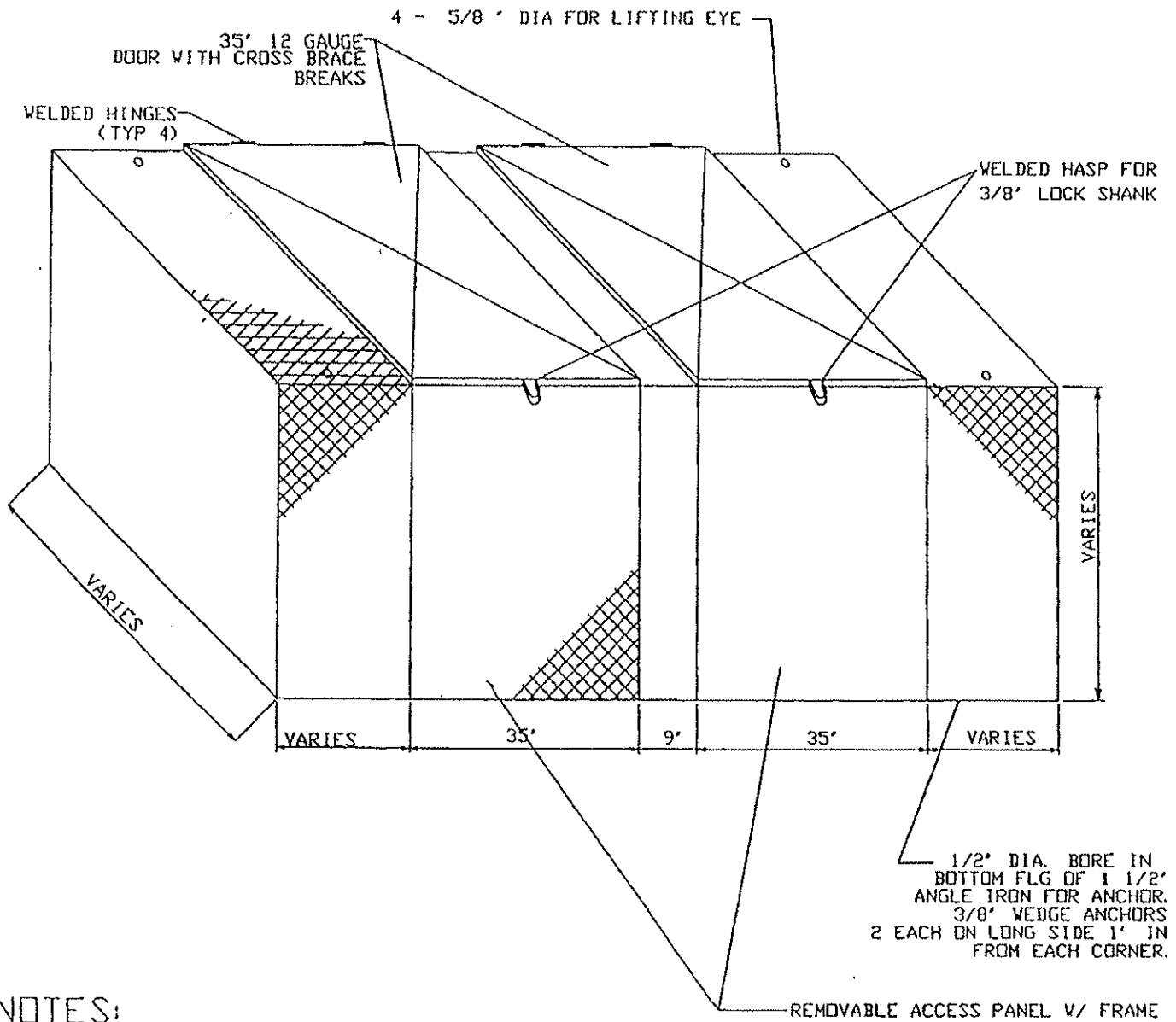
APPROVED BY:
Chris Voigt
CHRIS VOIGT, CITY ENGINEER/P.W. DIRECTOR

Henry Pepper
HENRY PEPPER, UTILITY SERVICES DIRECTOR

DRAWN BY: M. LAW/EV EV
CHECKED BY: RG DL
DATE: NOVEMBER 17, 2005

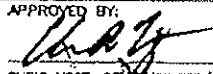
STANDARD 13 (B2)

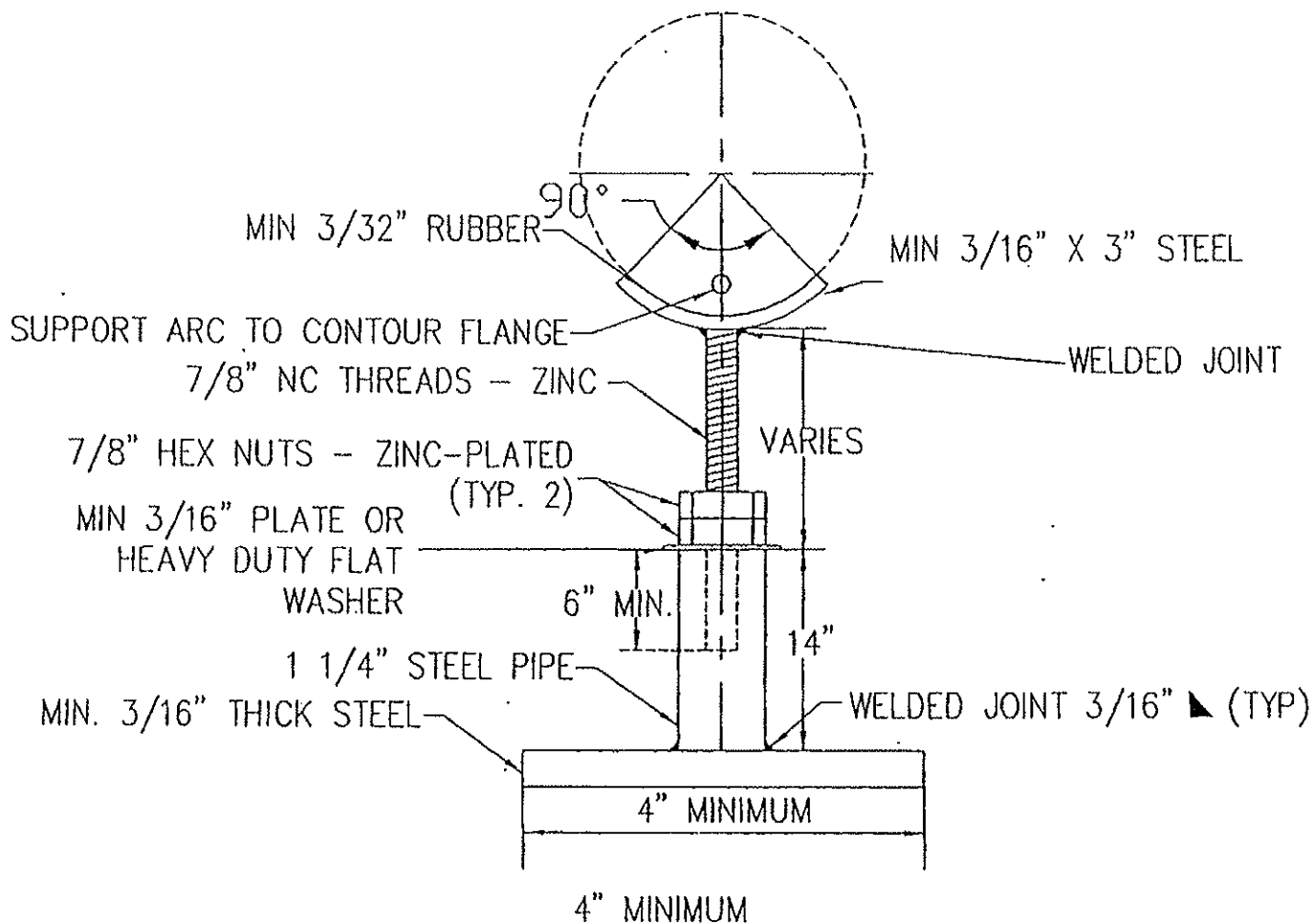
REV. 7/2/03 EWM
REV. 5/6/05 EWM



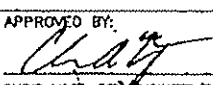
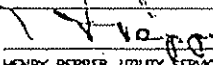
NOTES:

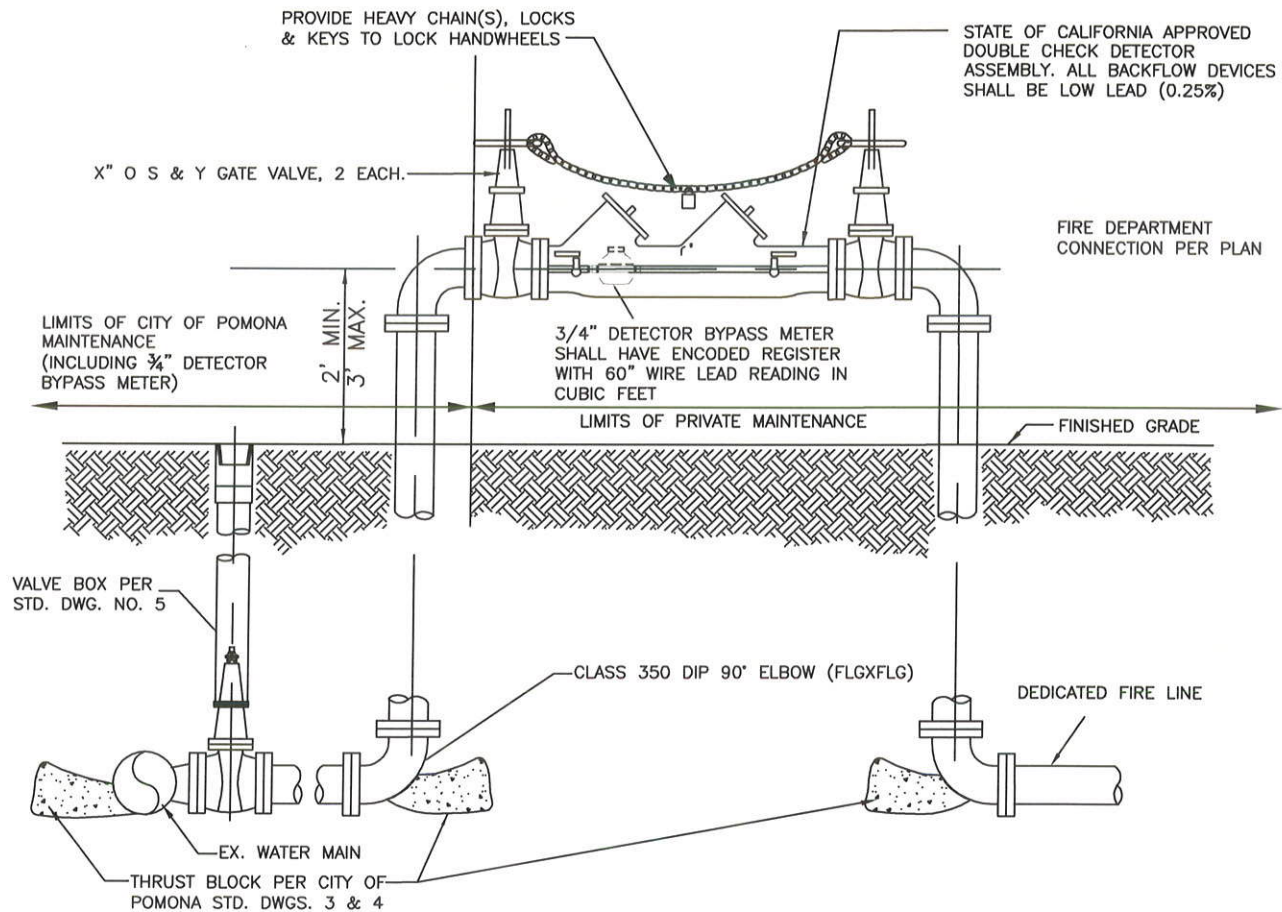
- 1) ALL FRAME DONE WITH 1/4" X 1-1/2" X 1-1/2" ANGLE
- 2) SCREEN SIZE NO. 9 - 3/4"

CITY OF POMONA PUBLIC WORKS DEPARTMENT TYPICAL SECURITY CAGE FOR ABOVE GROUND METER INSTALLATION	
APPROVED BY:  CHRIS VOIGT, CITY ENGINEER/P.W. DIRECTOR	DRAWN BY: M. LAM/EV <i>EV</i> CHECKED BY: RG R.A. DATE: NOVEMBER 17, 2005
REV. 5/8/05 EWV HENRY PEPPER, UTILITY SERVICES DIRECTOR	STANDARD
13 (C)	




NOTE: PRIMER AND COLD GALVANIZED PAINT ON ALL BARE STEEL.

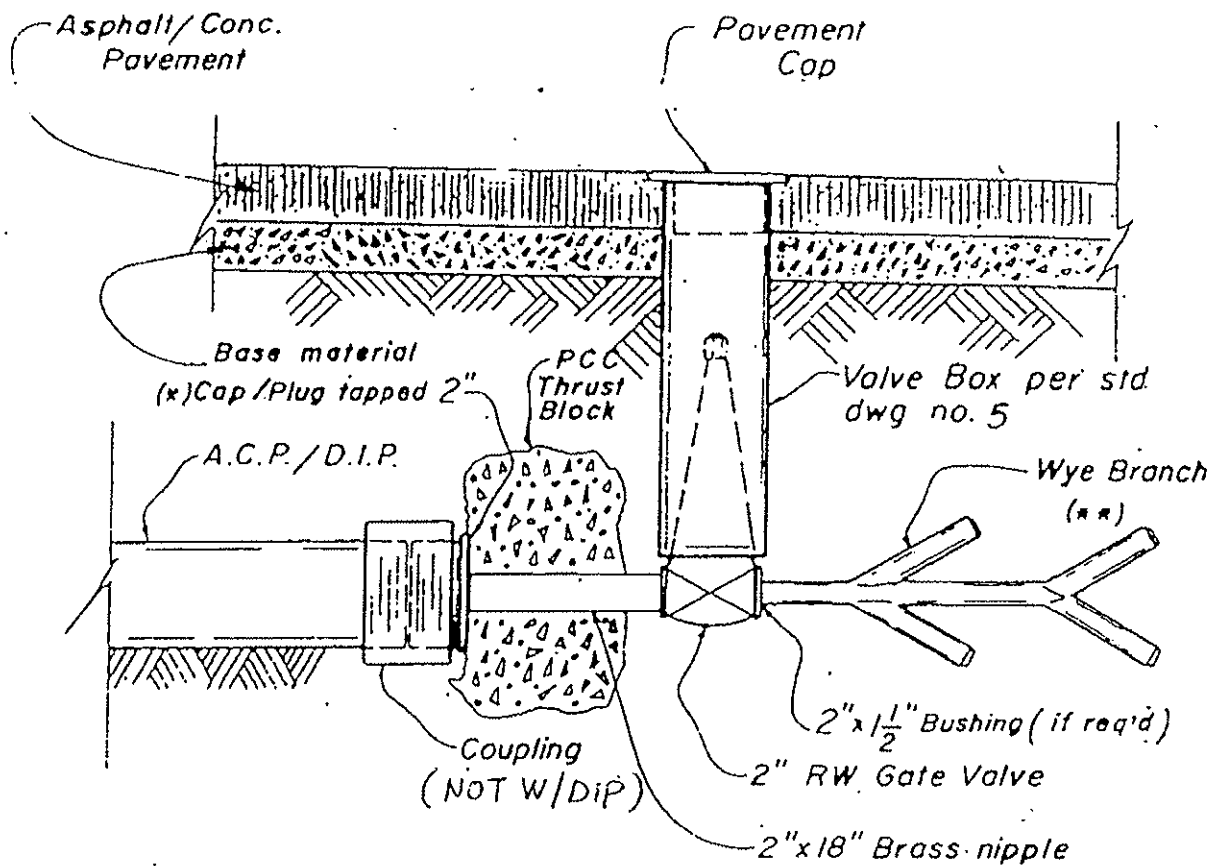
		CITY OF POMONA PUBLIC WORKS DEPARTMENT	
		METER PIPE SUPPORT DETAIL (DRAWING NOT TO SCALE)	
	APPROVED BY:  CHRIS VOGT, CITY ENGINEER/P.W. DIRECTOR	DRAWN BY: E. VALDERRAMA <i>EV</i> CHECKED BY: RG <i>RG</i> DATE: NOVEMBER 17, 2005	STANDARD 13 (F)
	 HENRY PEPPER, UTILITY SERVICES DIRECTOR		



APPROVED X" DOUBLE CHECK DETECTOR ASSEMBLY
(NOT TO SCALE)

 RENE GUERRERO, CITY ENGINEER RCE NO. 66263		2/19/15 DATE	
△	UPDATED DETAIL	2/14	GM
△	REVISIONS	DATE	INITIAL

CITY OF POMONA PUBLIC WORKS DEPARTMENT	
DOUBLE CHECK DETECTOR ASSEMBLY	
DRAWN BY: NH CHECKED BY: AC/DA/PS APPROVED BY: DP	STANDARD 14



NOTES:

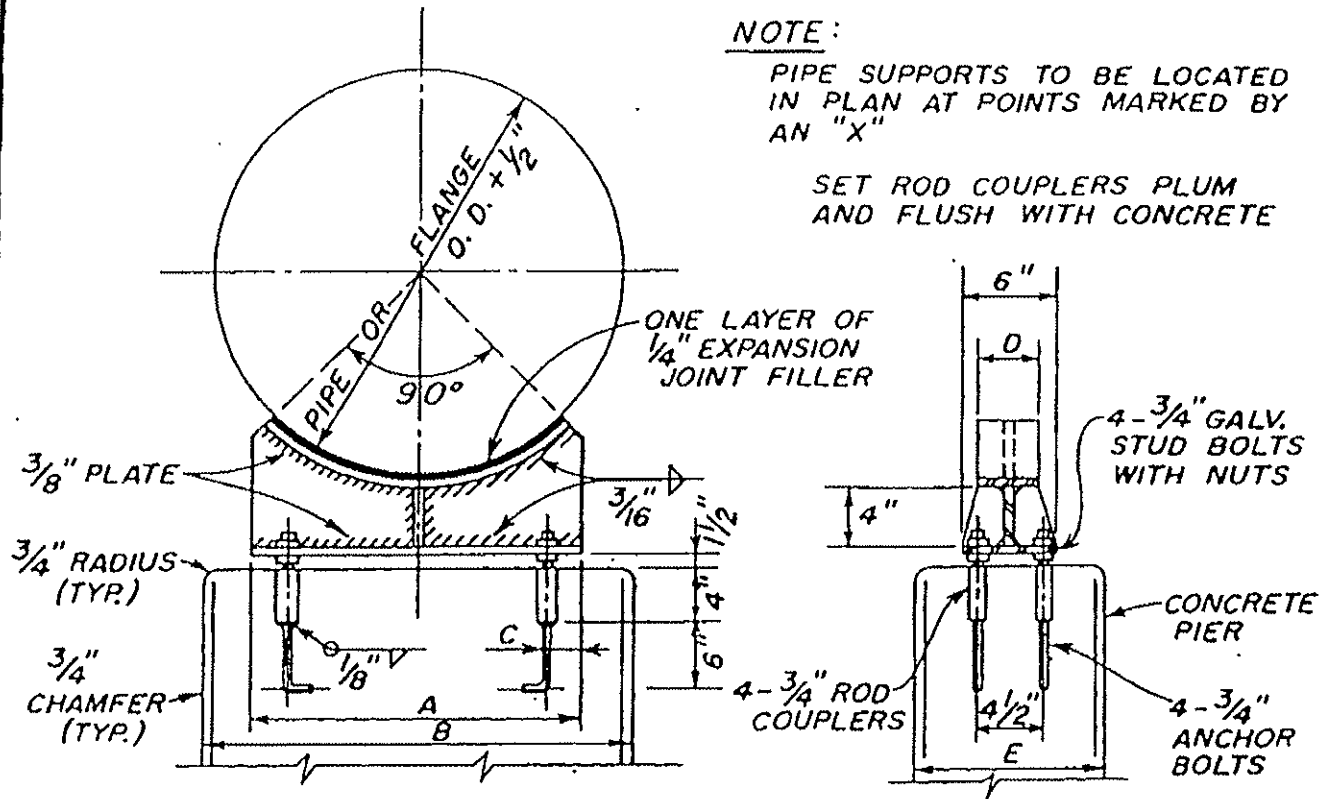
- 1- If D.I.P., main tap shall be $2\frac{1}{2}'' \times 2\frac{1}{2}'' \times 2''$ Insul. Bushing (*)
- 2- Wye branch shall be Mueller: H-15345 for $1\frac{1}{2}'' \times 1''$ - two branch
 H-15340 for $1\frac{1}{2}'' \times 1''$ - three branch
 H-15350 for $2'' \times 1''$ - four branch (**)

CITY OF POMONA WATER DEPARTMENT		
WYE BRANCH ASSEMBLY DETAIL		
Drawn By <u>J. C. M.</u>	STANDARD	Sht.
Check By <u>C. S.</u>		15

NOTE:

PIPE SUPPORTS TO BE LOCATED
IN PLAN AT POINTS MARKED BY
AN "X"

SET ROD COUPLERS PLUM
AND FLUSH WITH CONCRETE



PIPE SUPPORT DETAIL

- NO SCALE -

NOMINAL PIPE SIZE	DIMENSIONS IN INCHES						
	SUPPORTING PIPE OR FLANGE			SUPPORTING			
	C	D	E	PIPE		FLANGE	
	A	B	A	B	A	B	
6	2	4	12	10	16	10	16
8 & 10	2	4	12	10	20	14	20
12 & 14	2	4	12	12	22	16	22
16 & 18	2	4	12	14	26	20	26
20 & 22	3	5	12	16	28	22	28
24	3	5	12	18	30	24	30
26	4	5	12	20	32	26	32
30	4	5	12	24	36	30	36
34	4	5	15	26	40	34	40
36	5	6	15	28	42	36	42
42	5	6	18	32	46	40	46
48	6	6	18	38	50	44	50
54	6	6	18	42	56	50	56
60	6	6	18	46	60	54	60

NOTES

1. - GALVANIZE AFTER FABRICATION

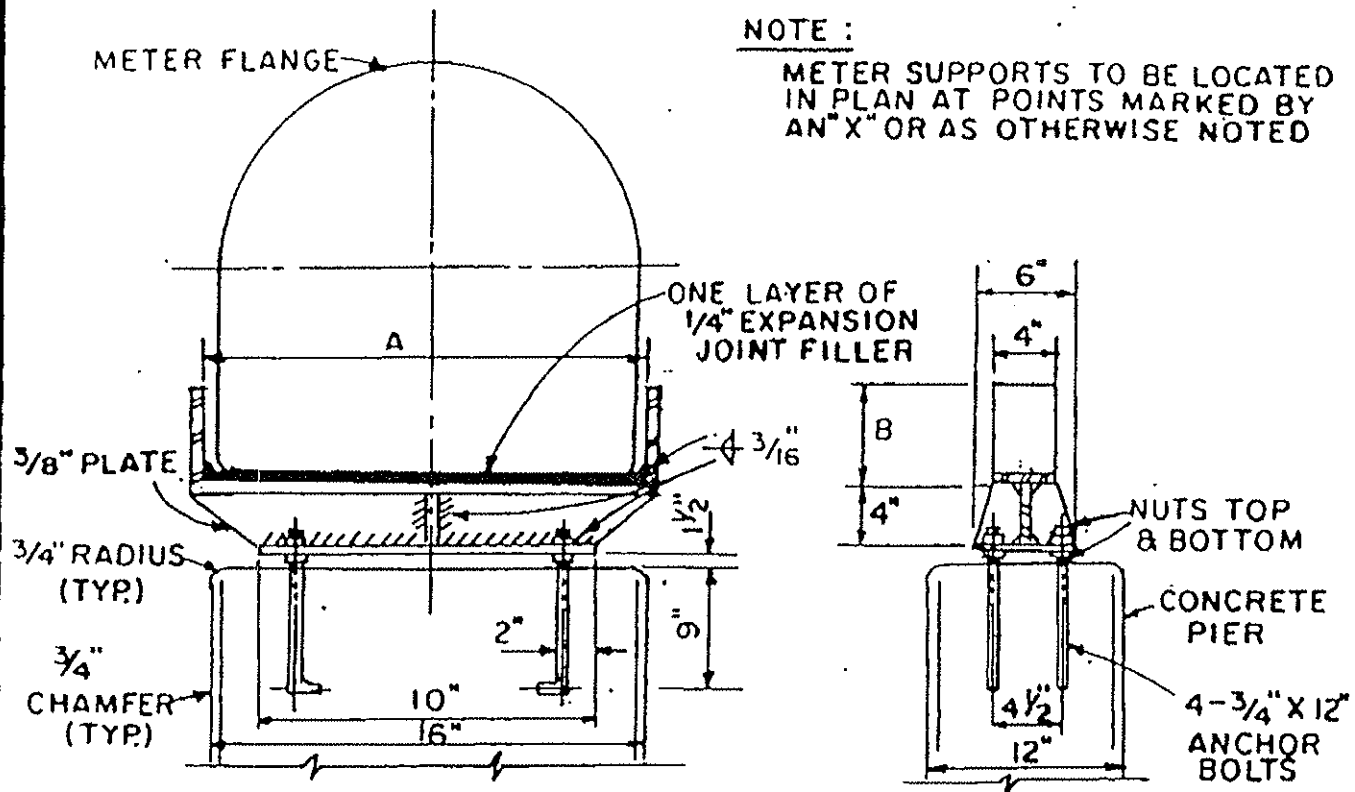
CITY OF POMONA
WATER DEPARTMENT

PIPE SUPPORT DETAIL

DWN. BY *Barclay*
CKD. BY *L. SHARER*

STANDARD

16



METER PIPE SUPPORT DETAIL

— NO SCALE —

DIMENSIONS IN INCHES						
METER SIZE	3	4	6	8	10	12
A-DIMENSION	8 1/4	9 3/4	11 3/4	14 1/4	16 3/4	20
B-DIMENSION	3	4	4	5	5	5

NOTES:

1. — GALVANIZE AFTER FABRICATION
2. — CONTRACTOR MAY AT HIS OPTION FABRICATE SUPPORT FROM A 4" H-BEAM.

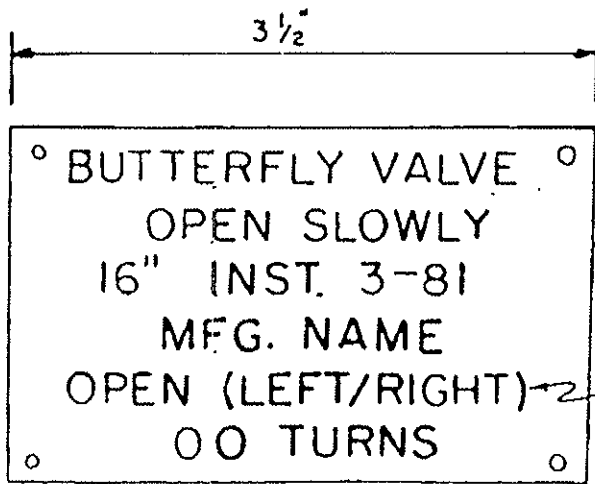
CITY OF POMONA WATER DEPARTMENT		
METER PIPE SUPPORT DETAIL		
OWN. BY <u>Bill B.</u>	STANDARD	17
CKD. BY <u>L. Silver</u>		

STAINLESS STEEL
 INDICATOR TAG STAMPED
 PER DETAIL BELOW
 MOUNT W/4-NO. 8X1½"
 STAINLESS STEEL SCREWS

4" X 4" REDWOOD POST

VARIABLES - TAG TO BE
 6" BELOW ST. GRADE

BOTTOM INLETED 1"
 TO GO OVER OPERATING
 NUT



MIN. 1/16" THICK 18/8 STAINLESS

ALL LETTERS 3/8" HIGH
 STAMPED INTO METAL

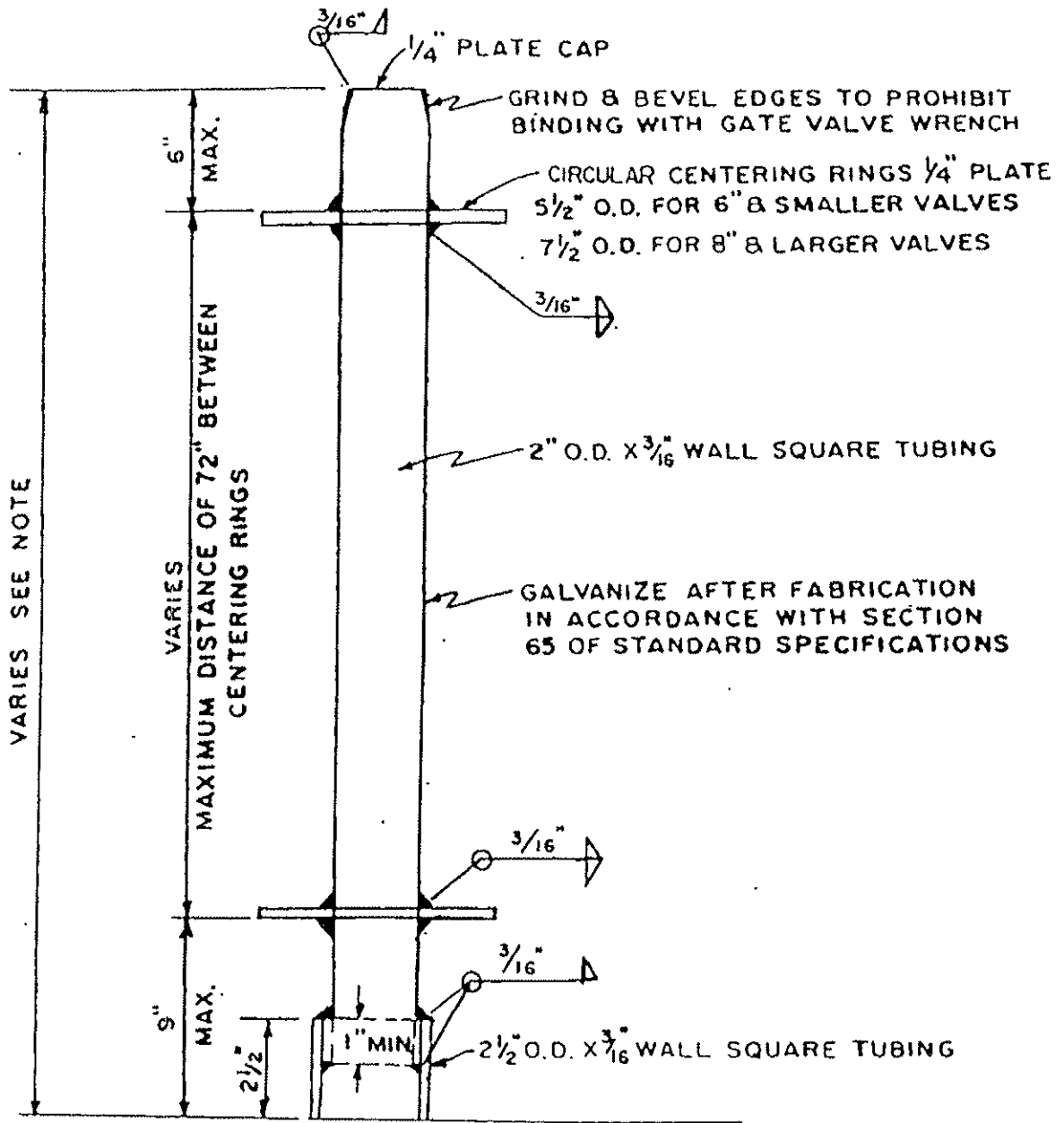
CITY OF POMONA
 WATER DEPARTMENT

BUTTERFLY VALVE
 INDICATOR POST

Dwn By BMI B.
 Ckd. By _____

STANDARD

18



NOTE:

LENGTH WILL BE DEPENDENT UPON DISTANCE FROM TOP OF VALVE TO FINISH GRADE. TOP OF EXTENSION SHALL BE NO LESS THAN 18" OR MORE THAN 24" FROM FINISH GRADE. MINIMUM LENGTH OF EXTENSION 30"

CITY OF POMONA
WATER DEPARTMENT

VALVE STEM
EXTENSION DETAIL

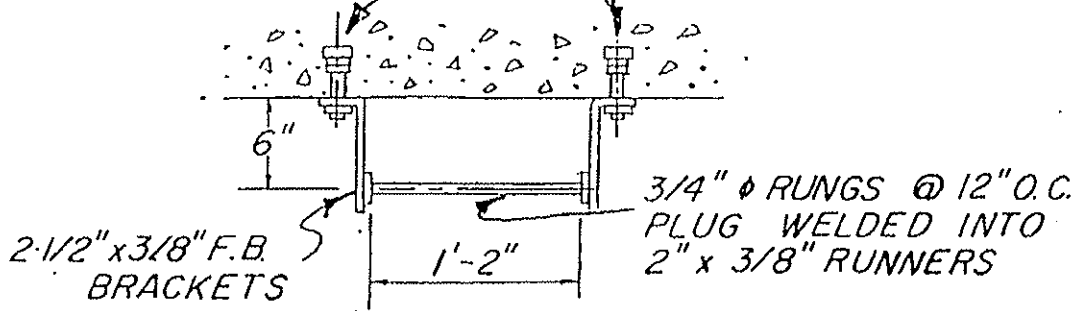
DWN. BY Bill B.

CKD. BY L. SHUEB

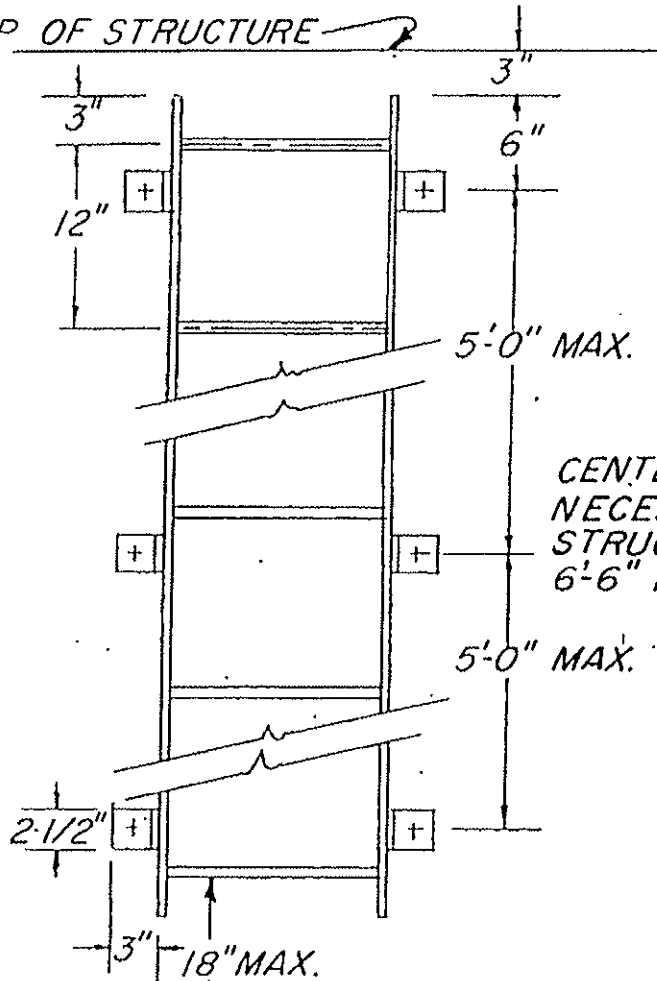
STANDARD

19

3/4" Ø GALVANIZED BOLTS W/ 2-UNIT
PLAIN CINCH ANCHORS



TOP OF STRUCTURE



BOTTOM OF STRUCTURE

NOTE—
GALVANIZE AFTER
FABRICATION.

CITY OF POMONA
WATER DEPARTMENT

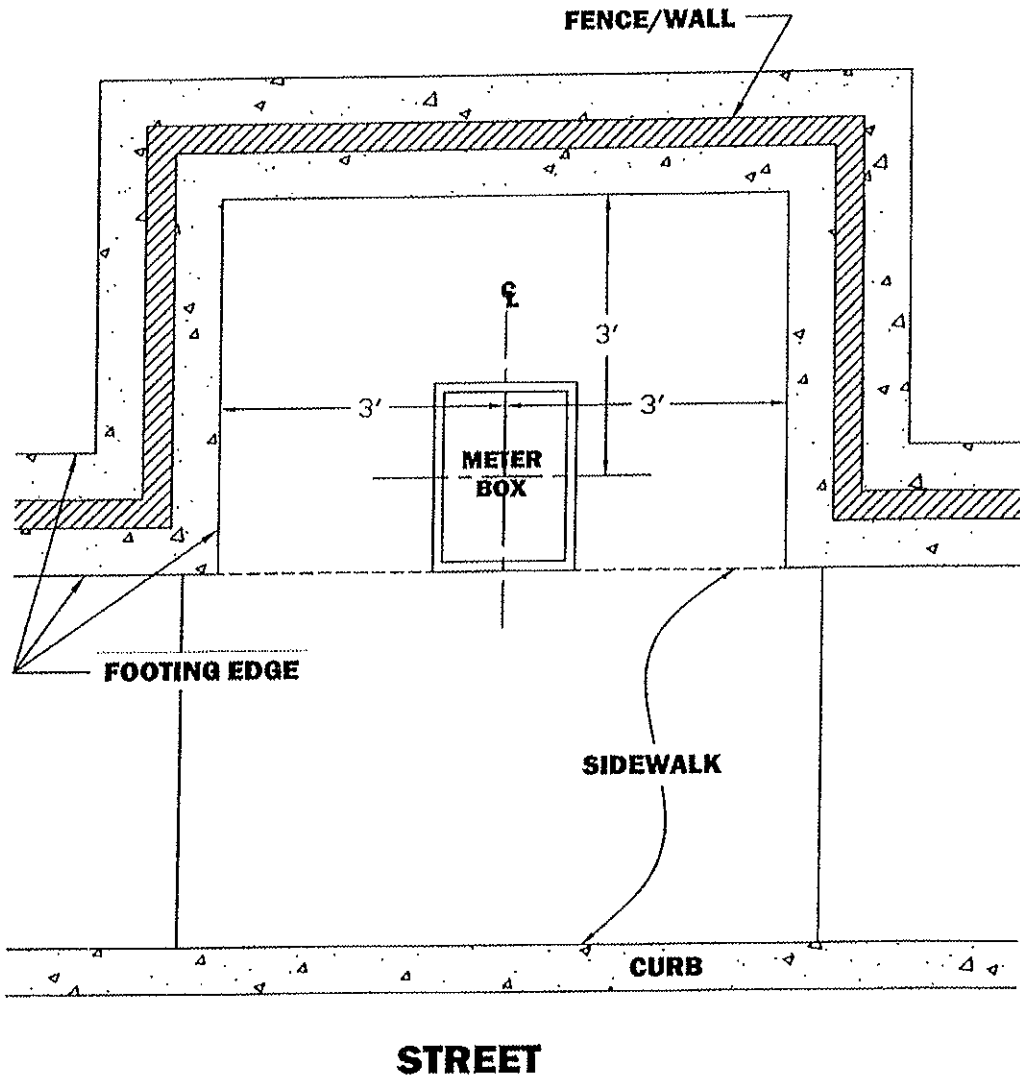
LADDER DETAIL

Dwn. By L. L. Smith
Ckd. By _____

STANDARD

20

WATER METER BOX CLEARANCE DETAILS



NOTES:

1. NO OBSTRUCTIONS OVERHEAD OR IN FRONT OF METER BOX

2. TO BE USED WHEN PROPOSED FENCE/WALL ENCROACHMENT ON EXISTING METER PLACEMENT

DRAWING NOT TO SCALE

3-05-12		CITY OF POMONA PUBLIC WORKS DEPARTMENT	
ALI ESKANDARI, CITY ENGINEER RCE NO. 63390		DATE	
▲ ADDED NEW DETAIL	02/10	PW	5/8" X 3/4" TO 2" METER BOX CLEARANCE DETAIL
			DRAWN BY: NH
			CHECKED BY: RG/JT
			APPROVED BY: PW DIRECTOR
▲ REVISIONS	DATE	INITIAL	STANDARD 21